

# 2021 WATCHES



**VICTORINOX**  
SWISS ARMY

The first part of the document discusses the importance of maintaining accurate records of all transactions. It emphasizes that every entry, no matter how small, should be recorded to ensure the integrity of the financial statements. This includes not only sales and purchases but also expenses, income, and transfers between accounts.

The second part of the document provides a detailed breakdown of the accounting cycle. It outlines the ten steps involved in the process, from identifying the accounting entity to preparing financial statements. Each step is explained in detail, with examples provided to illustrate the concepts.

The third part of the document discusses the various types of accounts used in accounting. It distinguishes between assets, liabilities, equity, revenue, and expense accounts, and explains how they are classified and balanced. It also covers the concept of debits and credits, and how they are used to record transactions.

The fourth part of the document discusses the importance of internal controls in accounting. It explains how internal controls help to prevent errors and fraud, and how they can be designed to ensure the accuracy and reliability of financial information.

The fifth part of the document discusses the role of accounting in business decision-making. It explains how financial statements provide valuable information to management and other stakeholders, and how this information is used to make informed decisions about the future of the business.

The sixth part of the document discusses the importance of ethics in accounting. It explains how accountants have a responsibility to act ethically and to provide accurate and honest financial information. It also discusses the consequences of unethical behavior and the importance of maintaining high standards of integrity.

The seventh part of the document discusses the role of accounting in the economy. It explains how accounting provides a common language for business transactions, and how this helps to facilitate trade and economic growth.

The eighth part of the document discusses the importance of technology in accounting. It explains how computerized accounting systems have revolutionized the industry, and how they have made it easier and more efficient to manage financial information.

The ninth part of the document discusses the importance of communication in accounting. It explains how accountants must be able to communicate effectively with their clients and other stakeholders, and how this helps to build trust and ensure the success of the business.

The tenth part of the document discusses the importance of continuous learning in accounting. It explains how the field of accounting is constantly evolving, and how accountants must stay up-to-date on the latest developments and trends in the industry.

**2021**  
**WATCHES**





**12 I.N.O.X.**

- 14 I.N.O.X.
- 20 I.N.O.X. PROFESSIONAL DIVER
- 26 I.N.O.X. MECHANICAL
- 30 I.N.O.X. V

**34 FIELDFORCE**

- 36 FIELDFORCE
- 40 FIELDFORCE CLASSIC
- 42 FIELDFORCE SPORT

**46 ALLIANCE**

- 48 ALLIANCE
- 54 ALLIANCE MECHANICAL
- 56 ALLIANCE SPORT CHRNO
- 58 ALLIANCE XS
- 62 ALLIANCE SMALL

**66 MAVERICK**

- 68 MAVERICK
- 72 MAVERICK SMALL

**74 AIRBOSS**

- 76 AIRBOSS MECHANICAL
- 78 AIRBOSS MECHANICAL MACH 9

**104 TECHNICAL SPECIFICATIONS**

- 104 TECHNICAL ESPECIFICATIONS

- 5 EDITORIAL
- 6 HISTORY
- 8 SWISS MADE
- 10 SUSTAINABILITY
- 80 STRAPS AND BRACELETS
- 82 STRAPS
- 89 5 YEAR WARRANTY +
- 90 PRODUCT TESTS
- 93 CUSTOMER SERVICE AND MAINTENANCE SERVICES
- 94 WATCH CARE TIPS
- 98 COMPONENTS AND MATERIALS
- 99 MOVEMENTS
- 100 CORPORATE BUSINESS
- 103 SWISS SURF ASSOCIATION



# FOR URBAN & OUTDOOR ADVENTURES

# QUALITY, DURABILITY, STYLE

The little red pocket knife with the Cross & Shield emblem on the handle is an instantly recognizable symbol of our company. In a unique way, it conveys excellence in Swiss craftsmanship, as well as the impressive expertise of more than 2,000 employees worldwide.

The principles by which we do business are as relevant today as they were in 1897 when our company founder, Karl Elsener, developed the “Original Swiss Army Knife”: functionality, innovation, iconic design and uncompromising quality. Our commitment to these principles for more than 130 years has allowed us to develop products that are not only extraordinary in design and quality, but also in their ability to serve as reliable companions for life’s adventures, both great and small.

The Victorinox Swiss Army Watch collection is in demand all over the world. Our watches are manufactured in our own workshops in Switzerland, using high-quality components and materials, and in compliance with strict standards. The models combine this outstanding quality with timeless design and impress with their unique durability, which they have proven time and again in numerous tests.

Limited edition watches and selected timepieces come in specially-designed packaging that houses both the watch and a matching pocket knife, a bonus that our watch brand currently offers.



**Carl Elsener**  
CEO Victorinox

# HISTORY



*(VICTORIA)*



## 1884 – 1897

- 1884 Karl Elsener I opens a knife cutler's workshop in Ibach-Schwyz. His mother Victoria actively supports him in his endeavors.
- 1891 Karl Elsener I establishes the Association of Swiss Master Cutlers. As a result, he is able to deliver the first major supply of soldier's knives to the Swiss Army.
- 1897 The original Swiss Officer's and Sports Knife is patented. It is known around the world today as the "Swiss Army Knife".

## 1909 – 1945

- 1909 In memoriam of his mother, Karl Elsener I chooses her first name Victoria as the brand name and registers the emblem with the cross and shield as a trademark. Today it is a registered trademark in over 120 countries.
- 1921 The invention of stainless steel (Inox) is a highly significant development for the cutlery industry. The combination of the two words "Inox" and "Victoria" results in today's company and brand name – Victorinox.
- 1931 Carl Elsener II introduces automation. In 1931, Brown Boveri is commissioned to set up the world's first all-electric hardening plant in Ibach. This guarantees that all knives are of a consistent high quality.
- 1945 US soldiers stationed in Europe after World War Two buy it in large quantities and it is a popular souvenir to take home.



## 1950 – 1984

- 1950 Carl Elsener III takes over the company management.
- 1977 The Original Swiss Army Knife becomes an exhibit for design at the Museum of Modern Art in New York.
- 1978 Nasa orders 50 Officer Knives Master Craftsman for the Space Shuttle program.
- 1979 Transformation of sole proprietorship "Messerfabrik Carl Elsener" into the family-owned company "Victorinox AG."
- 1984 The company doubles its manufacturing and office space.





1989



1999



2014



2020



2020

## 1989 – 2020

- 1989** Market entry for “Watches” under its Swiss Army brand in North America with its former U.S. sales partner.
- 1992** Opening of the first sales subsidiary in Japan.
- 1994** Establishment of Carl and Elise Elsener Gut Foundation with the mission to support national and international charitable projects.
- 1999** Market entry for “Travel Gear” with the American TRG Group in St. Louis as licensee.
- 2000** Establishment of the Victorinox Foundation which holds 90 % of the share capital of Victorinox AG. The remaining 10 % belong to the non-profit Carl and Elise Elsener-Gut Foundation.
- 2001** Launch of a clothing line in the U.S. and opening of the first Victorinox store in Soho, New York.
- 2005** Acquisition of the long-standing Swiss knife and watch manufacturer Wenger SA in Delémont. Wenger remains an independently operating subsidiary of Victorinox.
- 2007** Carl Elsener IV takes over the company management and further expands Victorinox as a global multi-product brand. Establishment of Victorinox Swiss Army Fragrance AG.
- 2008** Opening of the first European Victorinox flagship store in London.
- 2011** Opening of the Swiss Knife Valley Visitor Center in Brunnen, Switzerland.  
Carl Elsener III gets inducted into the BLADE Magazine Cutlery Hall of Fame.
- 2013** Integration of the Wenger knife business into the Victorinox brand.
- 2014** Acquisition of the travel gear business from previous licensee and establishment of the new business unit Victorinox Travel Gear AG. Opening of a store at a prime location in the city center of Zurich.
- 2016** Opening of the Watch Competence Center in Delémont, Switzerland.
- 2017** Discontinuation of Apparel to focus on the core product categories. Production of 500-millionth “Original Swiss Army Knife”.
- 2018** Ground breaking for a new distribution center in Seewen, Switzerland. The investment of some CHF 50 million represents a clear commitment to the Schwyz location.  
125th anniversary of Wenger.
- 2019** Our products are now available at over 50,000 points of purchase worldwide, including 80 retail stores and shop-in-shops, as well as in our own flagship and brand stores. At each point of sale, the Victorinox brand experience is made tangible for our consumers.
- 2020** Opening of the distribution center in Seewen.  
Relaunch of Fragrance line.

# SWISS MADE

Victorinox is an authentic Swiss brand with a strong history and heritage. The Swiss place great value on practicality; they take pride in innovation, quality and expertise.

We are no different. We ourselves want authentic, high-quality goods so that is what we make. If we need new ideas to get there we innovate, we collaborate until we have them. We do the job right and finish it properly, so we can take pride in our work, so it speaks for itself.

Located in the Swiss Jura, the Victorinox Watch Competence Center engineers, manufactures and assembles watches and watch components. The Center produces for Victorinox's own brands – Victorinox Swiss Army and Wenger – as well as for selected clients. For more than 130 years Victorinox has been developing its expertise in stainless steel, also known as inox steel, constantly improving product quality, process efficiency and cost effectiveness.

We make sure our products are reliable so that consumers can trust they are getting exactly what they want. For the office, the kitchen, the long-planned trip or the hike all the way up a mountain. Swissness and the active lifestyle of Swiss people are included in all products, so that customers will feel confident they are ready to face every day's adventure.



## VALUES OF AN AUTHENTIC SWISS BRAND

We make products the way we would like to have them ourselves. This means in outstanding Swiss quality, with solution-oriented functionality. We believe in innovation for smart, creative and contemporary products and services. And our no-frills iconic design is based on simple, distinctive and clean lines. Our Brand Values are defined by our promise to our customers, which describes how they will benefit from our products.

### QUALITY

is poured in every Victorinox Watch by the use of high-grade materials, rigorous quality testing, engineering and production in its own factory in Switzerland. And of course, all watches are Swiss Made.

### FUNCTIONALITY

is part of every Victorinox Watch in order to support the daily life adventure of its wearer as for example enhanced day and night readability on every watch.

### INNOVATION

is brought to Victorinox Watches amongst other by using innovative materials like carbon-composite for the case, genuine wood or American-made paracord for the straps.

### ICONIC DESIGN

is translated to Victorinox Watches by using the roots of the brand, the Swiss Army Knife, as design inspiration like for example a SAK shaped counter weigh for the second hand.



# SUSTAINABILITY

The issues of environmental protection and sustainability are high priorities at Victorinox. In both our internal operations and those of our suppliers, the company makes sure to use resources sparingly and efficiently while employing environmentally friendly production methods. Here are some examples:

## HEATING OIL ELIMINATED AND WATER CONSUMPTION DISCONTINUED

Thanks to our in-house heat pump, the Victorinox Watch Competence Center in Delémont no longer uses heating oil. We also stopped taking water from the city of Delémont. Our closed water circuit cools down the manufacturing machines through the heat pump. Every year, this saves 30,000 m<sup>3</sup> – or 30 million liters – of water, as well as 100,000 liters of heating oil.

## 55% RECYCLED WASTE

An integrated waste disposal plan for solid and liquid waste involves all employees in the recycling of resources and reduction of waste. Around 55% of waste is recycled.

## MORE THAN 3,000 M<sup>2</sup> OF SOLAR PANELS

The roofs of our knife and watch factories in Delémont hold more than 3,000 m<sup>2</sup> of solar panels. This produces 525,000 kWh of electricity every year, which equals what is consumed by around 170 average households, generating 20% of the amount of electricity needed for these factories.

## RECYCLED PACKAGING

Up to 90% of our cardboard packaging is made from recovered paper and 100% is made from chlorine-free bleached paper. The inks and finishes that we use do not contain any solvents or heavy metals.



### **MORE DETAILS ON HOW WE RECYCLE STEEL AT VICTORINOX:**

All the steel we use – the most important raw material in the manufacture of our knives – is 95% recycled. Around 600 tons of grinding sludge is then produced as a by-product in the processing of that steel. In order to ensure that this by-product can be disposed of properly, Victorinox has developed recycling facilities that are unique within the industry. The water contained in the sludge is absorbed and the steel particles are pressed into briquettes so they can be properly recycled.



**100% RECYCLED STEEL**





## I.N.O.X. STRONG AND RESILIENT ADVENTURE COMPANIONS

- Bold design built for strength and resilience
- With innovative materials for the case and strap
- Offers up to 200 m water resistance



The I.N.O.X. Collection keeps pace with an adventurous lifestyle – from intense battles on the squash court to the temperature shocks of a hot sauna and icy plunge, and even still looking great among the mud and crowds at a music festival. This collection features, among others, mechanical watches and elegant women's models, each with a unique character but that share the same principles of resilience and style. Crafted from tough materials like carbon composite, titanium, and stainless steel (316L), these watches make the perfect companion for an ocean swim, a mountain hike, or a day at the office.

# I.N.O.X.

## COLLECTION TECHNICAL SPECIFICATION

### CASE

- Ø 43.0 MM
- Crystal: Sapphire
- Crystal specification: Triple coated and anti-reflective
- Water resistant to: 20 ATM/200 M/660 FT
- Screw-in caseback
- Screw-Down Crown

### DIAL

- Luminescent Hands
- Date
- Monobloc



## COLLECTION KEY FOCUS POINTS



The Super-LumiNova® technology enables effortless readability in the dark



Thick underset sapphire crystal



Oversized protected screw-down crown



Carbon case highly resistant to scratches\*



Water resistant to 200m



## I.N.O.X. CARBON LE

∅ 43.0 MM

### MOVEMENT

- Analog quartz
- Ronda 715

### SPECIFIC FEATURES

- Unique lightweight carbon composite case is highly resistant to scratches
- Swiss made watch and Evolution 30 pocket knife; 1,500 piece limited edition set featuring glow-in-the-dark SuperLuminova® dial
- Camouflage design survival paracord strap, two additional straps (one military NATO, one black rubber) and protective compass bumper

### DETAILS

- Straps & bracelets: See page 82
- Movements: See page 99
- Technical specifications: See page 104



241927.1

## I.N.O.X. CARBON

∅ 43.0 MM

### MOVEMENT

- Analog quartz
- Ronda 715

### SPECIFIC FEATURES

- Withstands up to 130 extreme endurance homologation tests
- Unique space-tested carbon case that's highly resistant to scratches. Color matching innovative handwoven survival paracord strap with green tracers. The Super-LumiNova® technology enables effortless readability in the dark
- Delivered in bespoke packaging housing an additional rubber strap and bumper

### DETAILS

- Straps & bracelets: See page 82
- Movements: See page 99
- Technical specifications: See page 104



**I.N.O.X.**  
Ø 43.0 MM

**MOVEMENT**

- Analog quartz
- Ronda 715

**SPECIFIC FEATURES**

- Withstands 130 extreme endurance homologation tests
- High grade Swiss Made stainless steel (316L) case. The genuine rubber strap can be worn in any situation and under any circumstance.
- Delivered with a removable bumper to protect against scratches

**DETAILS**

- Straps & bracelets: See page 82
- Movements: See page 99
- Technical specifications: See page 104



I.N.O.X.



**I.N.O.X.**  
Ø 43.0 MM

**MOVEMENT**

- Analog quartz
- Ronda 715

**SPECIFIC FEATURES**

- Withstands up to 130 extreme endurance homologation tests
- Swiss made stainless steel (316L) case and an innovative survival paracord strap
- Delivered in a shockproof box along with optional orange rubber strap and black protective bumper

**DETAILS**

- Straps & bracelets: See page 82
- Movements: See page 99
- Technical specifications: See page 104



## I.N.O.X. Ø 43.0 MM

### MOVEMENT

- Analog quartz
- Ronda 715

### SPECIFIC FEATURES

- Withstands up to 130 extreme endurance homologation tests
- Swiss made stainless steel (316L) case and an innovative survival paracord strap
- Delivered in a shockproof box along with optional orange rubber strap and black protective bumper

### DETAILS

- Straps & bracelets: See page 82
- Movements: See page 99
- Technical specifications: See page 104



241894

## I.N.O.X. TITANIUM Ø 43.0 MM

### MOVEMENT

- Analog quartz
- Ronda 715

### SPECIFIC FEATURES

- Withstands up to 130 extreme endurance homologation tests
- Swiss made case crafted from hypoallergenic, lightweight titanium and a highly resilient genuine rubber strap
- Includes a removable compass bumper for anti-scratch protection

### DETAILS

- Straps & bracelets: See page 82
- Movements: See page 99
- Technical specifications: See page 104



241883



# I.N.O.X. PROFESSIONAL DIVER

## COLLECTION TECHNICAL SPECIFICATION

### CASE

- ∅ 45.0 MM
- Crystal: Sapphire
- Crystal specification: Triple coated and anti-reflective
- Water resistant to: 20 ATM/200 M/660 FT
- Screw-in caseback
- Screw-Down Crown

### DIAL

- Luminescent Hands
- Date
- Monobloc



## COLLECTION KEY FOCUS POINTS



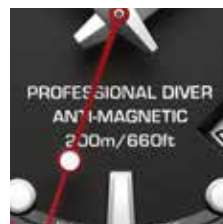
Unidirectional rotating bezel



Blue superluminova for diver indicators (minute hand & bezel marker) & green superluminova for time indicators



ISO divers' watches certification, water-resistant up to 200m.



Anti-magnetism protection



Bumper to protect the watch against scratches with removable magnifying glass

**I.N.O.X.  
PROFESSIONAL DIVER**  
Ø 45.0 MM

**MOVEMENT**

- Analog quartz
- Ronda 715

**SPECIFIC FEATURES**

- Withstands 130 extreme endurance homologation tests
- ISO 6425 certified diver watch with anti-magnetism and water resistance up to 200m. Extensible genuine rubber strap to fit safely over a diving suit.
- Delivered with a translucent protective bumper with removable magnifying glass

**DETAILS**

- Straps & bracelets: See page 82
- Movements: See page 99
- Technical specifications: See page 104



241733



241734



241736



**I.N.O.X.  
PROFESSIONAL DIVER**  
Ø 45.0 MM

**MOVEMENT**

- Analog quartz
- Ronda 715

**SPECIFIC FEATURES**

- Withstands 130 extreme endurance homologation tests
- ISO 6425 certified diver watch with anti-magnetism and water resistance up to 200m. Stainless steel strap with diver extension to fit safely over a diving suit
- Delivered with a translucent protective bumper with removable magnifying glass

**DETAILS**

- Straps & bracelets: See page 82
- Movements: See page 99
- Technical specifications: See page 104



241781



241782

**I.N.O.X.  
PROFESSIONAL DIVER**  
Ø 45.0 MM

**MOVEMENT**

- Analog quartz
- Ronda 715

**SPECIFIC FEATURES**

- Withstands up to 130 extreme endurance homologation tests
- ISO 6425 certified diver watch with antimagnetism and water resistance up to 200 m, sandblasted stainless steel case for a modern look and innovative handwoven survival paracord strap with reflective tracers to fit safely over a diving suit
- Delivered in a shockproof box housing an additional rubber strap and a translucent protective bumper with removable magnifying glass.



241843



241845



**DETAILS**

- Straps & bracelets: See page 82
- Movements: See page 99
- Technical specifications: See page 104





## I.N.O.X. PROFESSIONAL DIVER

Ø 45.0 MM

### MOVEMENT

- Analog quartz
- Ronda 715

### SPECIFIC FEATURES

- Withstands up to 130 extreme endurance homologation tests
- ISO 6425 certified diver watch with anti-magnetism and water resistance up to 200m. Sandblasted stainless steel case for a modern look. Extensible genuine rubber strap to fit safely over diving suit.
- Delivered in a shockproof box housing an additional rubber strap and a translucent protective bumper with removable magnifying glass.



241844

### DETAILS

- Straps & bracelets: See page 82
- Movements: See page 99
- Technical specifications: See page 104

## I.N.O.X. PROFESSIONAL DIVER

Ø 45.0 MM

### MOVEMENT

- Analog quartz
- Ronda 715

### SPECIFIC FEATURES

- Withstands 130 extreme endurance homologation tests.
- ISO 6425 certified diver watch with anti-magnetism and water resistance up to 200m. Hypoallergenic and light weighted titanium case for absolute comfort. Extensible genuine rubber strap to fit safely over a diving suit.
- Delivered with a translucent protective bumper with removable magnifying glass



241810

### DETAILS

- Straps & bracelets: See page 82
- Movements: See page 99
- Technical specifications: See page 104

**I.N.O.X.  
PROFESSIONAL DIVER**  
Ø 45.0 MM

**MOVEMENT**

- Analog quartz
- Ronda 715

**SPECIFIC FEATURES**

- Withstands 130 extreme endurance homologation tests.
- ISO 6425 certified diver watch with anti-magnetism and water resistance up to 200m. Hypoallergenic and light weighted titanium case for absolute comfort. Innovative handwoven survival paracord strap to fit safely over a diving suit.
- Delivered in a shockproof box housing an additional rubber strap and a translucent protective bumper with removable magnifying glass.

**DETAILS**

- Straps & bracelets: See page 82
- Movements: See page 99
- Technical specifications: See page 104



241812



241813





# I.N.O.X. MECHANICAL

## COLLECTION TECHNICAL SPECIFICATION

### CASE

- ∅ 43.0 MM
- Crystal: Sapphire
- Crystal specification: Triple coated and anti-reflective
- Water resistant to: 20 ATM/200 M/660 FT
- See-Through Caseback
- Screw-in caseback
- Screw-Down Crown

### DIAL

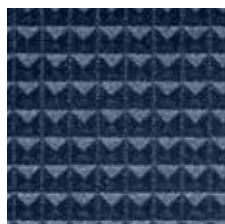
- Luminescent Hands
- Date
- Monobloc



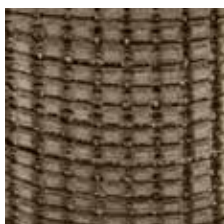
## COLLECTION KEY FOCUS POINTS



Swiss made automatic movement  
See-through case back



Officer's Knife inspired guilloché monobloc dial



Innovative wood strap\*



Bezel with anti-scratch coating



Water-resistant up to 200m

## I.N.O.X. MECHANICAL

Ø 43.0 MM

### MOVEMENT

- Mechanical automatic
- Sellita SW 200-1

### SPECIFIC FEATURES

- Swiss Made automatic movement Sellita SW 200-1 visible through the exhibition case back.
- High grade Swiss Made stainless steel (316L) case. Innovative wood strap.
- Delivered with a removable bumper to protect against scratches

### DETAILS

- Straps & bracelets: See page 82
- Movements: See page 99
- Technical specifications: See page 104



241834



241836

## I.N.O.X. MECHANICAL

Ø 43.0 MM

### MOVEMENT

- Mechanical automatic
- Sellita SW 200-1

### SPECIFIC FEATURES

- Swiss Made automatic movement Sellita SW 200-1 visible through the exhibition case back.
- High grade Swiss Made stainless steel (316L) case. Most resilient stainless-steel bracelet ever conceived.
- Delivered with a removable bumper to protect against scratches

### DETAILS

- Straps & bracelets: See page 82
- Movements: See page 99
- Technical specifications: See page 104



241835



241837

**I.N.O.X.**  
**CARBON MECHANICAL**  
Ø 43.0 MM

**MOVEMENT**

- Mechanical automatic
- Sellita SW 200-1

**SPECIFIC FEATURES**

- Unique space-tested carbon composite case highly resistant to scratches
- Swiss made automatic movement Sellita SW200 with 38-hour power reserve, visible through the titanium exhibition case back
- Delivered in a special packaging housing an exclusive Spartan PS knife and black protective bumper
- 

**DETAILS**

- Straps & bracelets: See page 82
- Movements: See page 99
- Technical specifications: See page 104



241866.1





# I.N.O.X. V

## COLLECTION TECHNICAL SPECIFICATION

### CASE

- Ø 37.0 MM
- Crystal: Sapphire
- Crystal specification: Triple coated and anti-reflective
- Water resistant to: 10 ATM/100 M/330 FT
- Screw-in caseback

### DIAL

- Luminescent Hands
- Applied indexes and numerals



## COLLECTION KEY FOCUS POINTS



Thin ergonomic shaped case



Enhanced scratch resistance on bezel



Unscrewed crown to limit nail breakage



Super-LumiNova® for effortless readability in the dark



Water-resistant up to 100m



**I.N.O.X. V**  
Ø 37.0 MM

NEW

**MOVEMENT**

- Analog quartz
- Ronda 715

**SPECIFIC FEATURES**

- Highly ergonomic and lightweight through expert horological engineering
- Super-soft paracord strap with new closing system
- Enhanced scratch resistance on bezel and unscrewed crown to limit nail breakage

**DETAILS**

- Straps & bracelets: See page 82
- Movements: See page 99
- Technical specifications: See page 104



241918



241920

NEW



241955



**I.N.O.X. V**  
∅ 37.0 MM

**MOVEMENT**

- Analog quartz
- Ronda 715

**SPECIFIC FEATURES**

- Highly ergonomic and lightweight through expert horological engineering
- Resistant rubber strap with easy release bar system
- Enhanced scratch resistance on bezel and unscrewed crown to limit nail breakage

**DETAILS**

- Straps & bracelets: See page 82
- Movements: See page 99
- Technical specifications: See page 104

NEW



241919

NEW



241921

NEW



241954

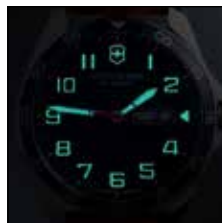




**FIELDFORCE**

# FUNCTIONAL AND ARMY-INSPIRED TIMEPIECES

- A sporty and masculine look for any occasion
- Super-LumiNova® ensures easy 24-hour readability
- Crown protection offers enhanced endurance



Blending iconic design with an innovative display technology, the FieldForce Collection is a force of its own. It's all about readability, with bold, distinct numerals and generously sized hands enhanced with Super-LumiNova® for 24-hour, day-and-night clarity. Some models feature a GMT function that keeps track of dual time zones, while others offer high multifunctionality with chronograph and tachymeter functions. Every FieldForce piece exudes a confident, classic style, reflecting its distinguished Swiss Army Knife heritage.

# FIELDFORCE

## COLLECTION TECHNICAL SPECIFICATION

### CASE

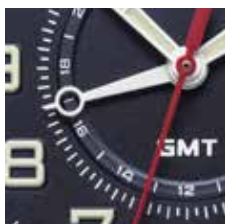
- ∅ 42.0 MM
- Crystal: Sapphire
- Crystal specification: Triple coated and anti-reflective
- Water resistant to: 10 ATM/100 M/330 FT
- Screw-in caseback

### DIAL

- Luminescent Hands
- Date
- Monobloc



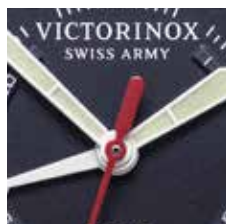
## COLLECTION KEY FOCUS POINTS



Dual-Time display (GMT function)\*



Aluminium bezel



Counter-weight inspired by the Swiss Army Knife



Super-LumiNova® for effortless readability in the dark



Protected crown

## FIELDFORCE GMT

∅ 42.0 MM

### MOVEMENT

- Analog quartz
- Ronda 515.24H

### SPECIFIC FEATURES

- Features iconic red second hand with Swiss Army knife-shaped counterweight, plus red cross and shield on dial
- GMT function keeps track of two time zones simultaneously and independently
- Generously sized hands, bold numerals and Super-LumiNova® for easy day and night-time readability

### DETAILS

- Straps & bracelets: See page 82
- Movements: See page 99
- Technical specifications: See page 104



241895



241896

## FIELDFORCE

### FIELDFORCE ∅ 42.0 MM

#### MOVEMENT

- Analog quartz
- Ronda 517

#### SPECIFIC FEATURES

- Sporty, serious and masculine timepiece that thrives in any situation
- With Day-Date function
- Generously sized hands and numerals featuring Super-LumiNova® for easy day and night readability

#### DETAILS

- Straps & bracelets: See page 82
- Movements: See page 99
- Technical specifications: See page 104



241846



241847



241848



241849



241850



241851



## FIELDFORCE CHRONO

∅ 42.0 MM

### MOVEMENT

- Analog quartz
- Ronda 5030.D

### SPECIFIC FEATURES

- Sporty, serious and masculine timepiece that thrives in any situation
- With chronograph functions and tachymeter scale
- Generously sized hands and numerals featuring Super-LumiNova® for easy day and night readability

### DETAILS

- Straps & bracelets: See page 82
- Movements: See page 99
- Technical specifications: See page 104



# FIELDFORCE CLASSIC

## COLLECTION TECHNICAL SPECIFICATION

### CASE

- ∅ 42.0 MM
- Crystal: Sapphire
- Crystal specification: Triple coated and anti-reflective
- Water resistant to: 10 ATM/100 M/330 FT
- Screw-in caseback

### DIAL

- Luminescent Hands
- Date
- Applied indexes and numerals



## COLLECTION KEY FOCUS POINTS



Sunray brushed dial and metallic numbers for a lux touch



Deployment buckle



Chronograph functions



Super-LumiNova® for effortless readability in the dark



Protected crown

## FIELDFORCE CLASSIC CHRONO

∅ 42.0 MM

### MOVEMENT

- Analog quartz
- Ronda 5030.D

### SPECIFIC FEATURES

- Brings a masculine, serious yet luxe feel
- With chronograph functions and tachymeter scale
- Generously sized hands and numerals featuring Super-LumiNova® for easy day and night readability

### DETAILS

- Straps & bracelets: See page 82
- Movements: See page 99
- Technical specifications: See page 104



241899



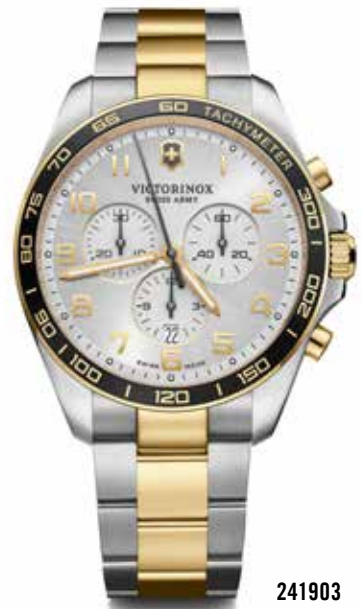
241900



241901



241902



241903



241928



241929

# FIELDFORCE SPORT

## COLLECTION TECHNICAL SPECIFICATION

### CASE

- ∅ 42.0 MM
- Crystal: Sapphire
- Crystal specification: Triple coated and anti-reflective
- Water resistant to: 10 ATM/100 M/330 FT
- Screw-in caseback

### DIAL

- Luminescent Hands
- Date
- Monobloc



## COLLECTION KEY FOCUS POINTS



Matt Black PVD Treatment\*



Tachymeter scale



Chronograph functions



Super-LumiNova® for effortless readability in the dark



Protected crown

## FIELDFORCE SPORT CHRONO

Ø 42.0 MM

### MOVEMENT

- Analog quartz
- Ronda 5030.D

### SPECIFIC FEATURES

- Swiss made watch with chronograph functions and tachymeter scale
- Delivered in special packaging housing an exclusive Spartan PS knife
- Generously sized hands and numerals featuring Super-LumiNova® for easy day and night readability

### DETAILS

- Straps & bracelets: See page 82
- Movements: See page 99
- Technical specifications: See page 104



241926.1

## FIELDFORCE SPORT GMT

Ø 42.0 MM

### MOVEMENT

- Analog quartz
- Ronda 515.24H

### SPECIFIC FEATURES

- Sporty, bold aesthetic finished with modern PVD gunmetal treatment and featuring colourful Swiss Army knife-shaped counterweight on the second hand
- GMT function keeps track of two time zones simultaneously and independently
- Generously sized hands, bold numerals and Super-LumiNova® for easy day and night-time readability

### DETAILS

- Straps & bracelets: See page 82
- Movements: See page 99
- Technical specifications: See page 104



241897

**FIELDFORCE SPORT CHRONO**

∅ 42.0 MM

**MOVEMENT**

- Analog quartz
- Ronda 5030.D

**SPECIFIC FEATURES**

- Sporty, colorful timepiece for every occasion
- Swiss made watch with chronograph functions and tachymeter scale
- Easy 24-hour readability thanks to generously sized hands and numerals with SuperLuminova®

**DETAILS**

- Straps & bracelets: See page 82
- Movements: See page 99
- Technical specifications: See page 104



241889



241890



241891



241892



241893









## ALLIANCE

# CONFIDENCE AND SUBTLETY ACROSS THE LINE

- A classic and timeless companion
- Cases come in 28 mm up to 44 mm sizes
- Offers up to 100 m water resistance



The Alliance Collection is the strong, silent type, flying under the radar with quiet and complete confidence. This range fuses the very best of Victorinox design, technology and expertise, offering watches in a range of sizes and with traditional watch-making details such as pyramidal markers and models with automatic movement, or elegant, feminine models enhanced with glittering Swarovski crystals. Each piece in the collection is dynamic and decisive, making this the go-to choice for people who appreciate top quality, alluring timepieces.

# ALLIANCE

## COLLECTION TECHNICAL SPECIFICATION

### CASE

- ∅ 40.0 MM
- Crystal: Sapphire
- Crystal specification: Triple coated and anti-reflective
- Water resistant to: 10 ATM/100 M/330 FT
- Screw-in caseback

### DIAL

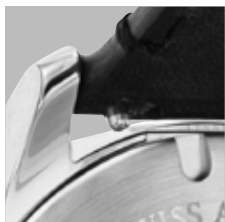
- Luminescent Hands
- Date
- Applied indexes



## COLLECTION KEY FOCUS POINTS



Enhanced wearer comfort



Quick spring release system on strap



Date calendar



Super-LumiNova® for effortless readability in the dark



Polished pyramidal indexes

**ALLIANCE**  
∅ 40.0 MM

**MOVEMENT**

- Analog quartz
- Ronda 705

**SPECIFIC FEATURES**

- Timeless design and quality craftsmanship for all occasions and optimal comfort
- High-grade 316 L stainless steel case with premium leather strap and generously sized hands
- Undergoes rigorous homologation tests to support your daily lifestyle

**DETAILS**

- Straps & bracelets: See page 82
- Movements: See page 99
- Technical specifications: See page 104

NEW



241904

NEW



241905

NEW



241906

NEW



241907

NEW



241908

# ALLIANCE

## ALLIANCE ∅ 40.0 MM

### MOVEMENT

- Analog quartz
- Ronda 705

### SPECIFIC FEATURES

- Timeless design and quality craftsmanship for all occasions and optimal comfort
- High-grade 316 L stainless steel case with premium leather strap and generously sized hands
- Undergoes rigorous homologation tests to support your daily lifestyle

### DETAILS

- Straps & bracelets: See page 82
- Movements: See page 99
- Technical specifications: See page 104

NEW



241909

NEW



241910

NEW



241911

NEW



241912

NEW



241913

**ALLIANCE**  
 ∅ 40.0 MM

**MOVEMENT**

- Analog quartz
- Ronda 705

**SPECIFIC FEATURES**

- Timeless design and quality craftsmanship for all occasions and optimal comfort
- High-grade 316 L stainless steel case with premium leather strap and generously sized hands
- Comes with Pioneer Alox Swiss Army Knife in beautiful gift box

**DETAILS**

- Straps & bracelets: See page 82
- Movements: See page 99
- Technical specifications: See page 104



**ALLIANCE CHRONO**  
 ∅ 44.0 MM

**MOVEMENT**

- Analog quartz
- Ronda Z60

**SPECIFIC FEATURES**

- Classic and timeless design to be worn in any situation. Chronograph functions
- High grade Swiss Made stainless steel (316L) case
- Generous sized hands and pyramidal markers enable effortless time readability

**DETAILS**

- Straps & bracelets: See page 82
- Movements: See page 99
- Technical specifications: See page 104



ALLIANCE

## ALLIANCE

### ALLIANCE CHRONO

Ø 44.0 MM

#### MOVEMENT

- Analog quartz
- Ronda Z60

#### SPECIFIC FEATURES

- Classic and timeless design to be worn under any circumstance
- High grade Swiss Made stainless steel (316L) case
- Generous sized hands and pyramidal markers enable effortless time readability. Delivered in a special box housing an assorted and exclusive Swiss Army Knife.

#### DETAILS

- Straps & bracelets: See page 82
- Movements: See page 99
- Technical specifications: See page 104



241745.1

### ALLIANCE LARGE

Ø 44.0 MM

#### MOVEMENT

- Analog quartz
- Ronda 6004.D

#### SPECIFIC FEATURES

- Classic and timeless design to be worn under any circumstance
- High grade Swiss Made stainless steel (316L) case
- Generous sized hands and pyramidal markers enable effortless time readability

#### DETAILS

- Straps & bracelets: See page 82
- Movements: See page 99
- Technical specifications: See page 104



241762



241763

### ALLIANCE LARGE

Ø 44.0 MM

#### MOVEMENT

- Analog quartz
- Ronda 6004.D

#### SPECIFIC FEATURES

- Classic and timeless design to be worn under any circumstance
- High grade Swiss Made stainless steel (316L) case
- Generous sized hands and pyramidal markers enable effortless time readability. Delivered in a special box housing an assorted and exclusive Swiss Army Knife.

#### DETAILS

- Straps & bracelets: See page 82
- Movements: See page 99
- Technical specifications: See page 104



241763.1



# ALLIANCE MECHANICAL

## COLLECTION TECHNICAL SPECIFICATION

### CASE

- ∅ 40.0 MM
- Crystal: Sapphire
- Crystal specification: Triple coated and anti-reflective
- Water resistant to: 10 ATM/100 M/330 FT
- See-Through Caseback
- Screw-in caseback

### DIAL

- Luminescent Hands
- Date
- Applied indexes



## COLLECTION KEY FOCUS POINTS



Swiss made automatic movement



See-through case back



Polished pyramidal indexes



Date calendar



Super-LumiNova® for effortless readability in the dark



## ALLIANCE MECHANICAL

∅ 40.0 MM

### MOVEMENT

- Mechanical automatic
- ETA 2892-A2

### SPECIFIC FEATURES

- Classic and timeless design to be worn under any circumstance
- Swiss made automatic movement ETA 2892 visible through the exhibition case back. 42-hour power reserve
- Numerical indexes and Super Luminova on dots and hands for easy readability

### DETAILS

- Straps & bracelets: See page 82
- Movements: See page 99
- Technical specifications: See page 104



241869



241871



241874



241898

# ALLIANCE SPORT CHRONO

## COLLECTION TECHNICAL SPECIFICATION

### CASE

- ∅ 44.0 MM
- Crystal: Sapphire
- Crystal specification: Triple coated and anti-reflective
- Water resistant to: 10 ATM/100 M/330 FT
- Screw-in caseback

### DIAL

- Luminescent Hands
- Date
- Monobloc



## COLLECTION KEY FOCUS POINTS



Monobloc dial



Tachymeter scale



Chronograph functions



Date calendar



Super-LumiNova® for effortless readability in the dark

**ALLIANCE  
SPORT CHRONO**  
∅ 44.0 MM

**MOVEMENT**

- Analog quartz
- Ronda 5030.D

**SPECIFIC FEATURES**

- Modern classic and sporty design to be worn under any circumstance. Chronograph and tachymeter functions
- High grade Swiss Made stainless steel (316L) case
- Monobloc dial to support your sporty lifestyle

**DETAILS**

- Straps & bracelets: See page 82
- Movements: See page 99
- Technical specifications: See page 104



241818



241816



241817



241819



241826

# ALLIANCE XS

## COLLECTION TECHNICAL SPECIFICATION

### CASE

- $\varnothing$  28.0 MM
- Crystal: Sapphire
- Crystal specification: Triple coated and anti-reflective
- Water resistant to: 10 ATM/100 M/330 FT
- Screw-in caseback

### DIAL

- Luminescent Hands
- Applied indexes



## COLLECTION KEY FOCUS POINTS



Bicolore strap\*



Case:  $\varnothing$  28 MM



Counter-weight inspired by the Swiss Army Knife



Swarovski crystals set on the dial\*



Super-LumiNova® for effortless readability in the dark

**ALLIANCE XS**  
∅ 28.0 MM

**MOVEMENT**

- Analog quartz
- Ronda 773

**SPECIFIC FEATURES**

- Feminin and timeless design to be worn in any situation.
- With eleven glittering Swarovski crystals set on the dial
- Numerical indexes and Super Luminova on dots and hands for easy readability

**DETAILS**

- Straps & bracelets: See page 82
- Movements: See page 99
- Technical specifications: See page 104



241875



241876



241877



241878



241879

**ALLIANCE XS**  
Ø 28.0 MM

**MOVEMENT**

- Analog quartz
- Ronda 773

**SPECIFIC FEATURES**

- Feminin and timeless design to be worn in any situation.
- With eleven glittering Swarovski crystals set on the dial
- Numerical indexes and Super Luminova on dots and hands for easy readability

**DETAILS**

- Straps & bracelets: See page 82
- Movements: See page 99
- Technical specifications: See page 104



241915



241916



241917

**ALLIANCE XS**  
Ø 28.0 MM

**MOVEMENT**

- Analog quartz
- Ronda 773

**SPECIFIC FEATURES**

- Feminin and timeless design to be worn in any situation.
- Structured pearly dial
- Numerical indexes and Super Luminova on dots and hands for easy readability

**DETAILS**

- Straps & bracelets: See page 82
- Movements: See page 99
- Technical specifications: See page 104



241840

**ALLIANCE XS**  
∅ 28.0 MM

**MOVEMENT**

- Analog quartz
- Ronda 773

**SPECIFIC FEATURES**

- Feminin and timeless design to be worn in any situation.
- Sunray brushed dial
- Super Luminova on dots and hands for easy readability

**DETAILS**

- Straps & bracelets: See page 82
- Movements: See page 99
- Technical specifications: See page 104



241838



241839



241841



241842

# ALLIANCE SMALL

## COLLECTION TECHNICAL SPECIFICATION

### CASE

- Ø 35.0 MM
- Crystal: Sapphire
- Crystal specification: Triple coated and anti-reflective
- Water resistant to: 10 ATM/100 M/330 FT
- Screw-in caseback

### DIAL

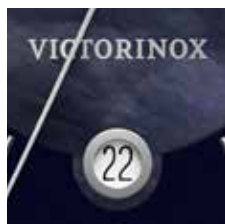
- Luminescent Hands
- Date
- Applied indexes



## COLLECTION KEY FOCUS POINTS



Moon phase\*



Circular date aperture at 6 o'clock.



Counter-weight inspired by the Swiss Army Knife



5-links polished and satin bracelet\*



Genuine mother of pearl dial\*



---

**ALLIANCE SMALL**  
Ø 35.0 MM

**MOVEMENT**

- Analog quartz
- Ronda 708

**SPECIFIC FEATURES**

- Feminin and timeless design to be worn under any circumstance.
- Moon-Phase function and brilliant cut authentic diamond at 6 o'clock
- Genuine mother of pearl dial turns each watch into a truly unique one.

**DETAILS**

- Straps & bracelets: See page 82
- Movements: See page 99
- Technical specifications: See page 104



241752

---

**ALLIANCE SMALL**  
Ø 35.0 MM

**MOVEMENT**

- Analog quartz
- Ronda 708

**SPECIFIC FEATURES**

- Feminin and timeless design to be worn in any situation.
- Circular date aperture at 6 o'clock
- Moon-Phase function

**DETAILS**

- Straps & bracelets: See page 82
- Movements: See page 99
- Technical specifications: See page 104



241833



---

**ALLIANCE SMALL**  
Ø 35.0 MM

**MOVEMENT**

- Analog quartz
- Ronda 705

**SPECIFIC FEATURES**

- Feminin and timeless design to be worn in any situation
- Brilliant cut authentic diamond at 6 o'clock
- Genuine mother of pearl dial turns each watch into a truly unique one.

**DETAILS**

- Straps & bracelets: See page 82
- Movements: See page 99
- Technical specifications: See page 104



241751

**ALLIANCE SMALL**

∅ 35.0 MM

**MOVEMENT**

- Analog quartz
- Ronda 705

**SPECIFIC FEATURES**

- Feminin and timeless design to be worn in any situation.
- With a stainless steel bracelet
- Circular date aperture at 6 o'clock

**DETAILS**

- Straps & bracelets: See page 82
- Movements: See page 99
- Technical specifications: See page 104



241828

**ALLIANCE SMALL**

∅ 35.0 MM

**MOVEMENT**

- Analog quartz
- Ronda 705

**SPECIFIC FEATURES**

- Feminin and timeless design to be worn in any situation.
- Eleven glittering crystals set on the dial. Circular date aperture at 6 o'clock
- Genuine mother of pearl dial turns each watch into a truly unique one.

**DETAILS**

- Straps & bracelets: See page 82
- Movements: See page 99
- Technical specifications: See page 104



241831





**MAVERICK**

# FANCY DIVING-INSPIRED TIMEPIECES

- Classy and precise diving-inspired wristwatch
- Features rotating bezel with count-up scale
- Crown protection offers enhanced durability



The Maverick Collection captures the adventurous spirit of the deep-sea diver, where pinpoint timing is a matter of life and death. These stylish watches feature a unidirectional bezel – a function developed for divers to record exact underwater times, and now a mark of the explorer and pioneer, calibrating everyday challenges and tasks. Above or below the waves, the technically precise and visually stunning Maverick watch delivers control and precision to navigate modern life, and is enhanced with sapphire crystal for optimal endurance.

# MAVERICK

## COLLECTION TECHNICAL SPECIFICATION

### CASE

- $\varnothing$  43.0 MM
- Crystal: Sapphire
- Crystal specification: Triple coated and anti-reflective
- Water resistant to: 10 ATM/100 M/330 FT
- Screw-in caseback

### DIAL

- Luminescent Hands
- Date
- Applied indexes and numerals



## COLLECTION KEY FOCUS POINTS



Unidirectional rotating bezel



Count-up scale



Crown protection & 100m water resistance



Military time



Date calendar

**MAVERICK**  
 ∅ 43.0 MM

**MOVEMENT**

- Analog quartz
- Ronda 715

**SPECIFIC FEATURES**

- Diving watch with unidirectional rotating bezel and count-up scale
- High grade Swiss Made stainless steel (316L) case
- Crown protection and 100m water resistance

**DETAILS**

- Straps & bracelets: See page 82
- Movements: See page 99
- Technical specifications: See page 104



241884



241798



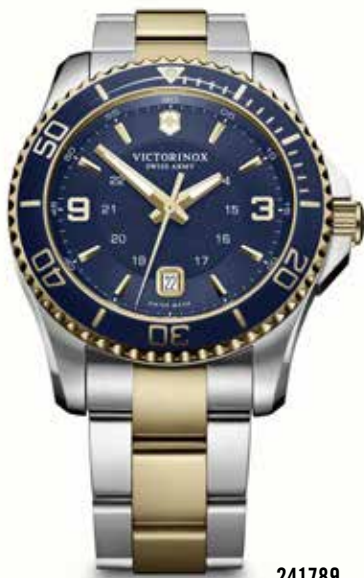
241602



241605



241697



241789



241824

# MAVERICK

## MAVERICK ∅ 43.0 MM

### MOVEMENT

- Analog quartz
- Ronda 715

### SPECIFIC FEATURES

- Diving watch with unidirectional rotating bezel and count-up scale
- High grade Swiss Made stainless steel (316L) case
- Crown protection and 100m water resistance

### DETAILS

- Straps & bracelets: See page 82
- Movements: See page 99
- Technical specifications: See page 104



241603



241698



241862



241863





**MAVERICK CHRONO**  
 ∅ 43.0 MM

**MOVEMENT**

- Analog quartz
- Ronda 5030.D

**SPECIFIC FEATURES**

- Diving watch with unidirectional rotating bezel and count-up scale. Chronograph and tachymeter functions
- High grade Swiss Made black PVD stainless steel (316L) case
- Crown protection and 100m water resistance

**DETAILS**

- Straps & bracelets: See page 82
- Movements: See page 99
- Technical specifications: See page 104



241797



241689



241693



241695



241791



241864



241865

MAVERICK

# MAVERICK SMALL

## COLLECTION TECHNICAL SPECIFICATION

### CASE

- $\varnothing$  34.0 MM
- Crystal: Sapphire
- Crystal specification: Triple coated and anti-reflective
- Water resistant to: 10 ATM/100 M/330 FT
- Screw-in caseback

### DIAL

- Luminescent Hands
- Date
- Applied indexes and numerals



## COLLECTION KEY FOCUS POINTS



Unidirectional rotating bezel



Count-up scale



Crown protection & 100m water resistance



Military time



Date calendar

**MAVERICK SMALL**  
∅ 34.0 MM

**MOVEMENT**

- Analog quartz
- Ronda 705

**SPECIFIC FEATURES**

- Diving watch with unidirectional rotating bezel and count-up scale
- High grade Swiss Made stainless steel (316L) case
- Crown protection and 100m water resistance

**DETAILS**

- Straps & bracelets: See page 82
- Movements: See page 99
- Technical specifications: See page 104



241609



241610



241612



241790



241701



**AIRBOSS**

# **BOLD AND DARING MECHANICAL TIMEKEEPERS**

- Technical aviator look inspired by aeronauts
- Mechanical movements offer self-winding freedom
- See-through caseback shows mechanical workings



The Airboss Collection was created with reliability and precision as the main goal, and aeronautics in mind. Inspired by the aircraft carrier count-down commander whose job requires on-the-mark accuracy, this collection of mechanical watches blends classic charm with cutting edge design. Some models feature circular slide rules for easy time calculations that mark the beats of a busy, modern lifestyle. And with the exclusively Swiss-made automatic movement that works in harmony with arm motions, each piece creates a synergy between watch and wearer.

# AIRBOSS MECHANICAL

## COLLECTION TECHNICAL SPECIFICATION

### CASE

- $\varnothing$  42.0 MM
- Crystal: Sapphire
- Crystal specification: Triple coated and anti-reflective
- Water resistant to: 10 ATM/100 M/330 FT
- See-Through Caseback
- Screw-in caseback

### DIAL

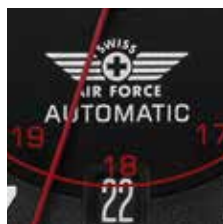
- Luminescent Hands
- Date
- Applied numerals



## COLLECTION KEY FOCUS POINTS



Military time printed under the crystal



Swiss made automatic movement



Diamond-cut striations on the dial tracks



See-through case back



Circular slide rule

## AIRBOSS MECHANICAL

∅ 42.0 MM

### MOVEMENT

- Mechanical automatic
- Sellita SW 200-1

### SPECIFIC FEATURES

- Swiss Made automatic movement Sellita SW200 visible through the exhibition case back
- 38-hour power reserve. Super-LumiNova® technology enables effortless readability in the dark. Calculate on the go thanks to the circular slide rule.
- Features Super-LumiNova technology for effortless readability in the dark

### DETAILS

- Straps & bracelets: See page 82
- Movements: See page 99
- Technical specifications: See page 104



241886



241887



241888



241820

# AIRBOSS MECHANICAL MACH 9

## COLLECTION TECHNICAL SPECIFICATION

### CASE

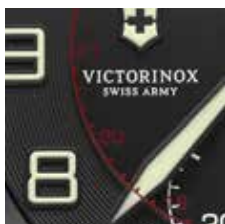
- $\varnothing$  45.0 MM
- Crystal: Sapphire
- Crystal specification: Triple coated and anti-reflective
- Water resistant to: 10 ATM/100 M/330 FT
- See-Through Caseback
- Screw-in caseback

### DIAL

- Luminescent Hands
- Date
- Monobloc



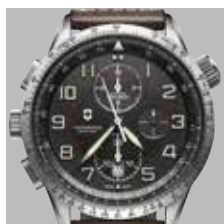
## COLLECTION KEY FOCUS POINTS



Military time printed under the crystal



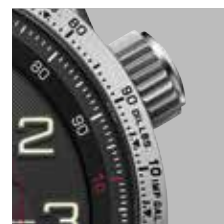
ETA Valjoux 7750 Swiss made automatic movement



180° movement rotation



See-through case back



Circular slide rule



## AIRBOSS MECHANICAL MACH 9

∅ 45.0 MM

### MOVEMENT

- Mechanical automatic
- ETA Valjoux 7750

### SPECIFIC FEATURES

- Swiss Made automatic movement ETA VALJOUX 7750 visible through the exhibition case back
- 48-hour power reserve. Convenient start/stop thumb operation thanks to a 180° movement rotation. Calculate on the go thanks to the circular slide rule.
- Military time & chronograph functions.

### DETAILS

- Straps & bracelets: See page 82
- Movements: See page 99
- Technical specifications: See page 104



241742



241716



241710



241722



# STRAPS AND BRACELETS

## LEATHER

All Victorinox Swiss Army leather straps are specially cut, stitched and lined by expert craftsmen. Various tanning techniques provide different textures and feels for our cowhide or calfskin straps. We also ensure that none of the leather used in our straps is sourced from endangered species. It is always important to note that the colours and suppleness of leather are subject to change with time and exposure to external factors. Exposing it to daily showers or swims is not recommended. We recommend that customers who live a very active lifestyle, especially one involving frequent exposure to salt water and/or heavy perspiration, opt for a steel bracelet or rubber strap.

## STAINLESS STEEL

The 316L stainless steel alloy used in Victorinox Swiss Army bracelets has strong antimagnetic properties and is optimized for toughness and corrosion resistance.

## MILANESE MESH BRACELETS

Stainless steel Milanese mesh bracelets are flexible, thin and easy to adjust, enabling the owner to adapt the size of their own bracelet without the need for any specific tools.

## GENUINE RUBBER

Victorinox Swiss Army uses genuine high-grade rubber for its straps, a natural and extremely comfortable material with a silky finish that is as resistant to ageing as silicone.



### **BALLISTIC NYLON**

Some Victorinox Swiss Army models are equipped with ballistic nylon straps, which also features in our of most exclusive line of travel gear. It provides the ultimate in reliability and durability.

### **NATO INSPIRED STRAPS**

NATO, or the North Atlantic Treaty Organization, has clear links to the military world. Our NATO-inspired straps are made from a single piece of textile woven from extraresistant nylon fibre and cotton.

### **PARACORD STRAPS**

The paracord strap is original, innovative and unique. Hand-woven from genuine American-Made certified parachute cord (highly resistant, multistrand nylon cord), it is the ideal companion for every adventure and expedition. Paracord straps can be unwoven and used for as many purposes as the wearer can possibly imagine.

## **SBB (STRAPS & BRACELETS BASE)**

Our easy-to-use SBB references are available in our Media Centre and are regularly updated. This practical database enables you to find the strap reference your customer needs quickly (metal bracelet, leather, rubber, paracord or any of our available straps) and look up compatible straps for every watch SKU launched since 2005. Information about how to download a digital version from our Media Centre can be provided.

# STRAPS

## I.N.O.X.



I.N.O.X. 241682.1



I.N.O.X. 241688.1



I.N.O.X. TITANIUM 241883



I.N.O.X. 241719.1



I.N.O.X. 241726



I.N.O.X. CARBON LE  
I.N.O.X. 241927.1  
241894



I.N.O.X. MECHANICAL 241835, 241837



I.N.O.X. PROFESSIONAL DIVER 241733



I.N.O.X. PROFESSIONAL DIVER 241734



I.N.O.X. PROFESSIONAL DIVER 241844



I.N.O.X. PROFESSIONAL DIVER 241736



I.N.O.X. PROFESSIONAL DIVER 241781, 241782



I.N.O.X. PROFESSIONAL DIVER 241813



I.N.O.X. PROFESSIONAL DIVER 241810



I.N.O.X. PROFESSIONAL DIVER 241812



I.N.O.X. MECHANICAL 241834, 241836



I.N.O.X. CARBON 241859



005886.9

I.N.O.X. CARBON

241860



005887.9

I.N.O.X. CARBON

241861



005889.9

I.N.O.X. PROFESSIONAL DIVER

241845



005891.9

I.N.O.X. PROFESSIONAL DIVER

241843



006006

I.N.O.X. CARBON MECHANICAL

241866.1



006073.9

I.N.O.X. V

241918



006145

I.N.O.X. V

241919



006146

I.N.O.X. V

241921



006123.9

I.N.O.X. V

241920



006311

I.N.O.X. V

241954



006313.9

I.N.O.X. V

241955

## FIELDFORCE



005766

ALLIANCE SPORT CHRONO

241818



005766.1

FIELDFORCE SPORT CHRONO

241892



005939

FIELDFORCE  
FIELDFORCE CHRONO  
FIELDFORCE GMT

241846, 241847  
241852, 241853  
241895



005943

FIELDFORCE  
FIELDFORCE CHRONO

241849, 241850, 241851  
241855, 241856, 241857



005945

FIELDFORCE  
FIELDFORCE CHRONO

241848  
241854



006047

FIELDFORCE SPORT CHRONO

241890

# STRAPS



006048

FIELDFORCE SPORT CHRONO

241893



006085

FIELDFORCE CLASSIC CHRONO

241902, 241903



006107

FIELDFORCE CLASSIC CHRONO

241900



006179

FIELDFORCE CLASSIC CHRONO

241928



006180

FIELDFORCE CLASSIC CHRONO

241929



006214

FIELDFORCE SPORT CHRONO

241926.1

# ALLIANCE



003982.1

ALLIANCE MECHANICAL

241898



005352

ALLIANCE CHRONO  
ALLIANCE LARGE

241745, 241745.1, 241746  
241762, 241763, 241763.1



005381

ALLIANCE SMALL

241751, 241752, 241828,  
241833



005387

ALLIANCE SMALL

241831



005761

ALLIANCE SPORT CHRONO

241816, 241817



005766

ALLIANCE SPORT CHRONO

241818



005769

ALLIANCE SPORT CHRONO

241819



005803

ALLIANCE SPORT CHRONO

241826



005850

ALLIANCE XS

241838



005853

ALLIANCE XS

241839, 241840, 241875,  
241915, 241916, 241917



005861

ALLIANCE XS  
ALLIANCE XS

241876, 241877  
241841, 241842



005971  
ALLIANCE MECHANICAL 241869, 241871



005976  
ALLIANCE MECHANICAL 241874



005979  
ALLIANCE XS 241878



005980  
ALLIANCE XS 241879



006128  
ALLIANCE 241907



006134  
ALLIANCE 241911, 241912, 241913



006135  
ALLIANCE 241910.1  
ALLIANCE 241909, 241910



006163  
ALLIANCE 241908



006165  
ALLIANCE 241904.1  
ALLIANCE 241904, 241905, 241906

## MAVERICK



004229  
MAVERICK 241698



004230  
MAVERICK CHRONO 241689, 241695  
MAVERICK 241436.CB, 241602, 241697



004305  
MAVERICK SMALL 241609, 241701



004783  
MAVERICK 241603



004793  
MAVERICK CHRONO 241693, 241791  
MAVERICK 241605, 241789, 241824



004816  
MAVERICK SMALL 241610



004845  
MAVERICK SMALL 241612, 241790



005544.1  
MAVERICK CHRONO 241864  
MAVERICK 241862

# STRAPS

## AIRBOSS

005756



MAVERICK  
MAVERICK CHRONO

241798, 241884  
241797

005946



MAVERICK CHRONO  
MAVERICK

241865  
241863

004446.1



AIRBOSS MECHANICAL MACH 9

241710

004447



AIRBOSS MECHANICAL  
AIRBOSS MECHANICAL MACH 9

241888  
241722

005241



AIRBOSS MECHANICAL MACH 9

241716

005406



AIRBOSS MECHANICAL MACH 9

241742

005543.1



AIRBOSS MECHANICAL

241820

006019



AIRBOSS MECHANICAL

241887







# 5 YEAR WARRANTY +



Victorinox Swiss Army watches are covered by our five-year warranty +, which exceeds the industry average. The comprehensive processes implemented by our quality team makes it possible for us to offer this extended warranty. Victorinox Swiss Army watches are subjected to rigorous testing and numerous quality controls before they are distributed. This warranty offers specific legal rights; other rights may also apply that vary from state to state or country to country.

## ANYTIME SERVICE

We hope that customers never experience a problem with a Victorinox Swiss Army watch, but in the event of a functional defect covered by warranty, the consumer can follow the simple steps below to file a claim. For their convenience, we have a global network of authorized Repair Centers ready to provide service anywhere in the world. Consumers may also follow these same steps to request a repair not covered by warranty:



- Visit [victorinox.com](http://victorinox.com).
- Click on 'Stores'.
- Enter location and select 'Repair Centers' to locate an Authorized Repair Center.
- Contact the authorized Repair Center for assistance.



# PRODUCT TESTS

Our watches comply fully with both European ISO standards and the federation of the Swiss Watch Industry standards (NIHS). In addition, Victorinox has also introduced its own standards and internal tests. We self-monitor our production to make sure each stage is mastered perfectly and that our extensive certification controls are adhered to until delivery. Victorinox Swiss Army also certifies each component that is brought in from external suppliers. The Victorinox Swiss Army Quality Team conducts tests before certifying a design.

## CONFORMITY

Each component entering our production facility in Delémont, Switzerland is checked to verify its dimensions, aesthetics, interchangeability, and physical and chemical resistance to guarantee its impeccable quality. This process is developed by our quality team, who defines standards for each type of component. All this occurs even before the production of a watch begins, thus ensuring the process is fully integrated from the very start.

## MECHANICAL & QUARTZ MOVEMENTS

Movement endures stress and strain throughout its lifetime. To ensure all of our movements remain functional and accurate for as long as possible, Victorinox Swiss Army simulates watch wearing in its own quality lab to test every quartz, manual and automatic caliber in its watches.

## WATER RESISTANCE

Victorinox Swiss Army watch cases are hermetically sealed using high-grade rubber gaskets and screw-in case backs to ensure that the movements are not exposed to moisture or dust. In the manufacturing process, each watch is individually tested for water-resistance with ultra-precise machines.

## TEMPERATURE RESISTANCE

Heat chamber and humidity tests are performed on Victorinox Swiss Army watches to make sure they continue to function perfectly in the tropics. Low temperature tests are also conducted to check that the watch – and more specifically the mechanism – can withstand cold weather conditions.

## **CORROSION RESISTANCE**

Perspiration, chlorine, soap, seawater, air pollution: these and other environmental factors can damage a watch's components and materials. Victorinox Swiss Army performs tests to make sure the parts in its watches do not suffer wear or loss of mobility due to exposure to corrosive elements. Neutrality and skin sensitization tests are also conducted on all components that come into contact with skin, including cases and all types of bracelets.

## **UV RESISTANCE**

Intense light and sunlight can damage many materials used in watches, such as coatings, synthetic elements, rubber and leather. These materials are therefore rigorously tested to ensure their durability. Certification is only granted by our Quality Team if no signs of ageing are observed during these tests.

## **TRACTION/TORSION RESISTANCE**

Buckles on leather straps and clasps on steel bracelets must withstand constant use during a watch's lifetime. Victorinox Swiss Army submits all of its watches to traction and torsion tests, with a particular focus on attachment pins, to make sure they can resist accidental snagging and also that there be no breakage or damage to the bracelet.

## **VIBRATION RESISTANCE**

Everyday wrist movements and sports such as cycling, jogging, horseback riding or skiing can affect the performance, quality and accuracy of a watch. To prevent this, special machines put Victorinox Swiss Army watches through more severe vibrations than they would ever experience on even the most active of wrists. If a watch or any of its components does not survive this trial, it is not certified.

## **SHOCK RESISTANCE**

A number of severe shock-resistance tests are performed on Victorinox Swiss Army watches. Heavy impacts – such as the equivalent of a violent collision with a wall, for example – are reproduced in the lab. After absorbing the shock, we make sure that the movement is functional.

## **AGE RESISTANCE**

Victorinox Swiss Army watches are function-tested to simulate the ageing process. Moving parts such as push-pieces, crowns and bezels are turned and manipulated to replicate several years of normal use.

## **ABRASION RESISTANCE**

The Quality Team conducts intensive abrasion tests, particularly on cases, bracelets and straps, to make sure our watches can be worn in all situations without suffering premature wear during their lifetime.

## **VISUAL AND MANUAL TESTING**

In addition to these mechanical and chemical tests, every Victorinox watch is visually checked by a member of the Quality Team between each manufacturing stage to assure its overall quality according to our own Victorinox Swiss Army standards. If a watch does not pass this visual inspection, it is repaired or replaced. All watches that do not pass our quality check are discarded.



# CUSTOMER SERVICE

Keeping a Victorinox watch looking its best and working perfectly requires regular servicing. Only authorized Victorinox Swiss Army customer service centers are able to make sure the work carried out meets our standards of excellence.

- each watch sent to an authorized Victorinox Swiss Army (VSA) service center is handled by a professional watchmaker.
- a diagnostic is performed and a detailed cost estimate made, free of charge (for watches that are no longer under warranty), which is submitted before any repairs are carried out.
- once the customer has accepted the cost estimate, our watchmakers carry out all the necessary procedures, including the replacement of any worn or defective components.

Victorinox Swiss Army guarantees the availability of spare parts for 10 years after production has ended. After servicing, the watch is returned the customer with a one-year warranty on the work carried out.

# MAINTENANCE SERVICES

As it endures daily life, skiing, watersports and sudden variations in temperature, a Victorinox watch requires care and maintenance to make sure it remains reliable and to deliver on its promise of accompanying its wearer on their everyday adventures.

Two types of servicing are available at any of our authorized VSA customer service centers.

Every two years, we recommend maintenance servicing. This will ensure that:

- the watch is completely water-resistant (it is dismantled, all the gaskets and the crown are replaced if necessary, the case is cleaned, etc.)
- the movement works correctly (the battery is changed in a quartz watch, mechanical movements are checked and adjusted)

Every six years, depending on the model of the watch, personal use and the local climate, we recommend a complete overhaul. This involves:

- a comprehensive revision of the movement (it is dismantled, the functions are checked, any worn component are replaced, etc).
- water-resistance and accuracy are also carefully verified.

# WATCH CARE TIPS

## OUR ADVICES FOR TAKING CARE OF A VICTORINOX SWISS ARMY WATCH

Like all quality products, Victorinox Swiss Army watches require attention and care. Following a few basic recommendations will protect the watch over time.

### WATER-RESISTANCE

To prevent the infiltration of water or dust, all watches (quartz or mechanical) should have their water-resistance checked every year by an authorized VSA service center.

We recommend having this test done before the summer or before going on vacation, as this is when watches are particularly exposed to water pressure and strong variations in temperature

METERS	FEET	ATM	USAGE
50	165	5	Suitable for showering or swimming in shallow water
100	330	10	Suitable for swimming or snorkeling
200	660	20	Suitable for scuba diving
500	1650	50	Suitable for serious deep water diving





## HOW TO USE YOUR WATCH IN WATER

**Water resistance classification:** Watches are classified by their degree of water resistance. The water resistance information can be checked on the case back of the Victorinox watch; it refers to the water resistance table on this page.

**Water-resistance guarantee:** The water-resistance of the watch cannot be guaranteed indefinitely. The gaskets may age, crowns or pushers may receive knocks and changes in temperature may weaken water resistance. We recommend a water-resistance test every 18 months at an authorized Victorinox Swiss Army service center or at least every time the case of the watch is opened.

**Important:** Do not operate the pushers or the crown while your watch is underwater. Make sure both are properly pushed back or screwed down.

## MECHANICAL MOVEMENT (MAINTENANCE)

An automatic or hand-wound movement is a miniaturized engine running 24 hours a day, 7 days a week. To sustain its accuracy (between -2 and + 20 seconds per day), it needs regular maintenance and checking.

## CONDENSATION

A sudden change in temperature may cause condensation to appear beneath the crystal. This will not affect the watch's function and will soon disappear on its own. Nevertheless, it indicates a weakness in the watch's water-resistance and we strongly advise taking the watch to an authorized VSA service center.





## CLEANING

To preserve the attractive appearance of the watch, it should be washed in slightly soapy water, then rinsed in clean water and dried with a soft cloth. Soft toothbrush: A toothbrush may be also used to clean the watch. A brush with soft bristles should be used to avoid scratching the watch case or bracelet. Leather strap: To clean the leather strap, it should be rinsed under clean water then rubbed with a soft brush and a little soap. A soft cloth can be used to wipe it. Cleaned leather should be kept away from any source of heat while it's drying.

## STRAP CARE

Authentic Victorinox Swiss Army leather straps will last an average of 12 to 18 months, under normal conditions of use. This lifespan depends on various factors such as skin acidity, perspiration, contact with chemicals, weather conditions, climate and humidity. For instance, contact with water or any other liquid may cause the strap to wear prematurely. To keep the leather strap in a good condition, we recommend removing the watch for daily showering or swimming. If the user has a very active lifestyle, particularly involving frequent exposure to salt water or heavy perspiration, we recommend a steel bracelet or rubber strap. The color and suppleness of leather straps are subject to change with time and exposure to external elements

## SHOCKS

Impact, drops and repeated friction that could wear away the metal and affect the watch's mechanism should be avoided. We recommend removing the watch before playing sports such as tennis, squash or golf, and avoiding contact with chemical products, exposure to high temperatures and strong magnetic fields.

## TO AVOID

Do not set the date between 21:00 (9 pm) and 03:00 (3 am) when the date mechanism is in action. Be careful to not confuse noon and midnight. Do not expose to chemicals, solvents or gases as they can cause deterioration, discoloration and damage to the case. Do not apply any cosmetics or perfumes directly onto the case, leather strap or metal bracelet. Avoid high temperatures and strong magnetic fields.

## WHILE TRAVELING

Before a vacation: To prevent infiltration of water or dust, the watch needs to pass a water-resistance test during the last 18 months at an authorized Victorinox Swiss Army service center. At the airport: To protect the watch from magnetism, we advise removing the watch before going through security control.





# COMPONENTS AND MATERIALS

## STAINLESS STEEL

The 316L stainless steel alloy used in Victorinox Swiss Army cases and bracelets has strong anti-magnetic properties and is optimised for toughness and corrosion resistance. The 316L stainless steel we use complies with the nickel migration limits imposed by the European REACH Regulation.

## PVD (PHYSICAL VAPOR DEPOSITION)

Widely used in watchmaking, PVD is a high-performance, pollution-free and non-allergenic technology that is also employed by the aeronautic industry. The process involves adding a titanium coating to stainless steel by condensing a metal vapour in a partial vacuum, thus circumventing electrolytic and chemical processes. Victorinox Swiss Army also implements a special process for watches with hints of gold: a thin layer of gold powder is added after the surface is treated PVD, providing a longer-lasting finish than conventional gold-plating.

## SAPPHIRE CRYSTALS

All Victorinox Swiss Army watches are fitted with a scratch-resistant crystal glass cut from a polished slice of solid sap-

phire. Each one is triple-coated with an anti-reflective treatment on the internal side for enhanced legibility.

## GENUINE MOTHER-OF-PEARL

Resilient and iridescent, genuine mother-of-pearl features in several Victorinox Swiss Army dial designs. Genuine mother-of-pearl is produced inside the shells of certain molluscs, meaning that each dial adorned with mother-of-pearl is utterly unique.

## BATTERIES

Victorinox Swiss Army equips its quartz watches with mercury-free batteries in compliance with global regulations and standards. This positive step towards environmental sustainability has no effect on either the precision or efficiency of a quartz watch. Each battery has an estimated lifespan of 2 years.

## LUMINESCENCE

This technology, branded as Super-LumiNova®, offers enhanced brightness in low-light conditions thanks to a non-radioactive and non-toxic substance. Victorinox Swiss Army uses Super-LumiNova® for any highly functional features of its watches, usually applying it to components such as the hands, numerals or bezel markers, etc.

# MOVEMENTS

All movements used in our watches are Swiss Made. We mainly use the following three suppliers:

## SELLITA:

A vital pillar of the Swiss watchmaking industry that was founded in 1950, SELLITA has a long tradition in the assembly, design and manufacture of quality mechanical movements. We use its movements for a variety of our mechanical watches.

## ETA:

ETA has over 200 years of experience in manufacturing quality movements. Its calibers are found in a selection of our mechanical watches.

## RONDA:

RONDA is one of the world's leading manufacturers of highly innovative, precision electronic watch movements, which form the foundation of many of our watches.

<b>Automatic Mechanical Movements</b>	<b>Sellita SW200-1</b> 38 hour power reserve 28'800 vibrations/hour (4 Hz) 26 jewels 11 1/2 lines Ø 25.60 mm	<b>ETA 2824-2</b> 38 hour power reserve 28'800 vibrations/hour (4 Hz) 25 jewels 11 1/2 lines Ø 25.60 mm	<b>ETA VALJOUX 7750</b> 48 hour power reserve 28'800 vibrations/hour (4 Hz) 25 jewels 13 ¼ lines Ø 30.00 mm
<b>Quartz Movements</b>	<b>Ronda 517</b> Day & Date 3 hands 11 1/2 lines Ø 25.60 mm  <b>Ronda 715</b> Date 3 hands 11 1/2 lines Ø 25.60 mm  <b>Ronda 6004.D</b> Date Small second 2 hands 11 1/2 lines Ø 25.60 mm	<b>Ronda 705</b> Date 3 hands 10 1/2 lines Ø 23.3w0 mm  <b>Ronda 773</b> 3 hands 7 3/4 lines Ø 17.20 mm  <b>Ronda Z60</b> Day & Date Chrono 3-6-9 13 1/4 lines Ø 25.60 mm	<b>Ronda 708</b> Date Moon Multifunction 10 1/2 lines Ø 23.30 mm  <b>Ronda 5030.D</b> Date Chrono 3-6-9 12 1/2 lines Ø 28.00 mm

\*Non-exhaustive liste

# CORPORATE BUSINESS

## SHOW GENUINE GRATITUDE WITH OUR TIMEPIECES

Our stylish, robust watches demonstrate appreciation for jobs well done with a heartfelt “Thank you”. Put a smile on their face with a personalized edition of one of our elegant or sporty timepieces. Choose from laser engraving, etching and more to add your company’s touch to our iconic watches. Your clients and employees will thank you right back.



**LASER ENGRAVING**  
241897, FieldForce GMT



**LASER ENGRAVING**  
I.N.O.X.



**TAMPONPRINT**  
241846, FieldForce



**TAMPONPRINT**  
241821, Airboss



## ETCHING

6.9076.22W5, Bread and Pastry Knife

6.9056.17K6, Santoku Knife



## TAMPONPRINT

0.8313.W, Cheese Master



## DIGITAL HAPTIC 3D

1.3703, Climber



## THERMAL TRANSFER PRINT

610939,

Travel Accessories Edge

Packable Backpack



## THERMAL TRANSFER PRINT

6109459,

Travel Accessories Edge

Toiletry Case Compact







# TRUE, AUTHENTIC FANS: MEET OUR BRAND AMBASSADOR SWISS SURF ASSOCIATION

Victorinox has been sponsoring the Swiss Surfing Association since 1994, thanks to our shared love of adventure and an active lifestyle. It takes real passion to surf in landlocked Switzerland and we have long admired the dedication of Swiss pro surfers. We are proud to provide them with waterproof watches that are innovative, robust, uncomplicated and elegant in design.



# TECHNICAL SPECIFICATIONS

Ref	Description	Page	EAN	Movement	Power reserve	Case diameter	Case height	LUG width	Strap/bracelet ref
241602	Maverick	69	7630000716156	Ronda 715	-	43	9.7	22	004230
<p><b>Case:</b> Stainless steel, silver, Polished-brushed   <b>Bezel:</b> Stainless steel, blue, Polished, Unidirectional rotating bezel   <b>Dial:</b> blue, Circular brushed, Military Time 24h   <b>Crystal:</b> Sapphire   <b>Case back:</b> Stainless steel, Screw-in caseback   <b>Bracelet:</b> Stainless steel, silver, Brushed   <b>Closure:</b> Stainless steel, Deployant clasp, Diver Extension   <b>Water resistant to:</b> 10 ATM/100 M/330 FT   <b>Battery Nr.:</b> 20091</p>									
241603	Maverick	70	7630000716163	Ronda 715	-	43	9.7	22	004783
<p><b>Case:</b> Stainless steel, silver, Polished-brushed   <b>Bezel:</b> Stainless steel, blue, Polished, Unidirectional rotating bezel   <b>Dial:</b> blue, Circular brushed, Military Time 24h   <b>Crystal:</b> Sapphire   <b>Case back:</b> Stainless steel, Screw-in caseback   <b>Bracelet:</b> Rubber, blue, -   <b>Closure:</b> Stainless steel, Regular buckle   <b>Water resistant to:</b> 10 ATM/100 M/330 FT   <b>Battery Nr.:</b> 20091</p>									
241605	Maverick	69	7630000716224	Ronda 715	-	43	9.7	22	004793
<p><b>Case:</b> Stainless steel, silver/gold two tone, Polished-brushed   <b>Bezel:</b> Stainless steel, green, Polished, Unidirectional rotating bezel   <b>Dial:</b> green, Circular brushed, Military Time 24h   <b>Crystal:</b> Sapphire   <b>Case back:</b> Stainless steel, Screw-in caseback   <b>Bracelet:</b> Stainless steel, silver, Brushed   <b>Closure:</b> Stainless steel, Deployant clasp, Diver Extension   <b>Water resistant to:</b> 10 ATM/100 M/330 FT   <b>Battery Nr.:</b> 20091</p>									
241609	Maverick Small	73	7630000716170	Ronda 705	-	34	7.95	18	004305
<p><b>Case:</b> Stainless steel, silver, Polished-brushed   <b>Bezel:</b> Stainless steel, blue, Polished, Unidirectional rotating bezel   <b>Dial:</b> blue, Circular brushed, Military Time 24h   <b>Crystal:</b> Sapphire   <b>Case back:</b> Stainless steel, Screw-in caseback   <b>Bracelet:</b> Stainless steel, silver, Brushed   <b>Closure:</b> Stainless steel, Deployant clasp, Diver Extension   <b>Water resistant to:</b> 10 ATM/100 M/330 FT   <b>Battery Nr.:</b> 20091</p>									
241610	Maverick Small	73	7630000716187	Ronda 705	-	34	7.95	18	004816
<p><b>Case:</b> Stainless steel, silver, Polished-brushed   <b>Bezel:</b> Stainless steel, blue, Polished, Unidirectional rotating bezel   <b>Dial:</b> blue, Circular brushed, Military Time 24h   <b>Crystal:</b> Sapphire   <b>Case back:</b> Stainless steel, Screw-in caseback   <b>Bracelet:</b> Rubber, blue, -   <b>Closure:</b> Stainless steel, Regular buckle   <b>Water resistant to:</b> 10 ATM/100 M/330 FT   <b>Battery Nr.:</b> 20091</p>									
241612	Maverick Small	73	7630000716248	Ronda 705	-	34	7.95	18	004845
<p><b>Case:</b> Stainless steel, silver/gold two tone, Polished-brushed   <b>Bezel:</b> Stainless steel, green, Polished, Unidirectional rotating bezel   <b>Dial:</b> green, Circular brushed, Military Time 24h   <b>Crystal:</b> Sapphire   <b>Case back:</b> Stainless steel, Screw-in caseback   <b>Bracelet:</b> Stainless steel, silver, Brushed   <b>Closure:</b> Stainless steel, Deployant clasp, Diver Extension   <b>Water resistant to:</b> 10 ATM/100 M/330 FT   <b>Battery Nr.:</b> 20091</p>									
241682.1	I.N.O.X.	17	7630000718075	Ronda 715	-	43	13.58	21	005104
<p><b>Case:</b> Stainless steel, silver, Brushed, Screw-Down Crown   <b>Bezel:</b> Stainless steel, silver, Polished-brushed, Fixed bezel   <b>Dial:</b> black, Matt, Military Time 24h   <b>Crystal:</b> Sapphire   <b>Case back:</b> Stainless steel, Screw-in caseback   <b>Bracelet:</b> Rubber, black, -   <b>Closure:</b> Stainless steel, Regular buckle   <b>Water resistant to:</b> 20 ATM/200 M/660 FT   <b>Battery Nr.:</b> 20091</p>									
241688.1	I.N.O.X.	17	7630000718068	Ronda 715	-	43	13.58	21	005108
<p><b>Case:</b> Stainless steel, silver, Brushed, Screw-Down Crown   <b>Bezel:</b> Stainless steel, silver, Polished-brushed, Fixed bezel   <b>Dial:</b> blue, Matt, Military Time 24h   <b>Crystal:</b> Sapphire   <b>Case back:</b> Stainless steel, Screw-in caseback   <b>Bracelet:</b> Rubber, blue, -   <b>Closure:</b> Stainless steel, Regular buckle   <b>Water resistant to:</b> 20 ATM/200 M/660 FT   <b>Battery Nr.:</b> 20091</p>									
241689	Maverick Chrono	71	7630000718808	Ronda 5030.D	-	43	12.2	22	004230
<p><b>Case:</b> Stainless steel, silver, Polished-brushed   <b>Bezel:</b> Stainless steel, blue, Polished, Unidirectional rotating bezel, Tachymeter   <b>Dial:</b> blue, Circular brushed   <b>Crystal:</b> Sapphire   <b>Case back:</b> Stainless steel, Screw-in caseback   <b>Bracelet:</b> Stainless steel, silver, Brushed   <b>Closure:</b> Stainless steel, Deployant clasp, Diver Extension   <b>Water resistant to:</b> 10 ATM/100 M/330 FT   <b>Battery Nr.:</b> 20075</p>									
241693	Maverick Chrono	71	7611160049742	Ronda 5030.D	-	43	12.2	22	004793
<p><b>Case:</b> Stainless steel, silver/gold two tone, Polished-brushed   <b>Bezel:</b> Stainless steel, green, Polished, Unidirectional rotating bezel, Tachymeter   <b>Dial:</b> green, Circular brushed   <b>Crystal:</b> Sapphire   <b>Case back:</b> Stainless steel, Screw-in caseback   <b>Bracelet:</b> Stainless steel, gold, Brushed   <b>Closure:</b> Stainless steel, Deployant clasp, Diver Extension   <b>Water resistant to:</b> 10 ATM/100 M/330 FT   <b>Battery Nr.:</b> 20075</p>									
241695	Maverick Chrono	71	7611160049766	Ronda 5030.D	-	43	12.2	22	004230
<p><b>Case:</b> Stainless steel, silver, Polished-brushed   <b>Bezel:</b> Stainless steel, black, Polished, Unidirectional rotating bezel, Tachymeter   <b>Dial:</b> black, Circular brushed   <b>Crystal:</b> Sapphire   <b>Case back:</b> Stainless steel, Screw-in caseback   <b>Bracelet:</b> Stainless steel, silver, Brushed   <b>Closure:</b> Stainless steel, Deployant clasp, Diver Extension   <b>Water resistant to:</b> 10 ATM/100 M/330 FT   <b>Battery Nr.:</b> 20075</p>									
241697	Maverick	69	7611160049780	Ronda 715	-	43	11.4	22	004230
<p><b>Case:</b> Stainless steel, silver, Polished-brushed   <b>Bezel:</b> Stainless steel, black, Polished, Unidirectional rotating bezel   <b>Dial:</b> black, Circular brushed, Military Time 24h   <b>Crystal:</b> Sapphire   <b>Case back:</b> Stainless steel, Screw-in caseback   <b>Bracelet:</b> Stainless steel, silver, Brushed   <b>Closure:</b> Stainless steel, Deployant clasp, Diver Extension   <b>Water resistant to:</b> 10 ATM/100 M/330 FT   <b>Battery Nr.:</b> 20091</p>									
241698	Maverick	70	7611160049797	Ronda 715	-	43	11.4	22	004229
<p><b>Case:</b> Stainless steel, silver, Polished-brushed   <b>Bezel:</b> Stainless steel, black, Polished, Unidirectional rotating bezel   <b>Dial:</b> black, Circular brushed, Military Time 24h   <b>Crystal:</b> Sapphire   <b>Case back:</b> Stainless steel, Screw-in caseback   <b>Bracelet:</b> Rubber, black, -   <b>Closure:</b> Stainless steel, Regular buckle   <b>Water resistant to:</b> 10 ATM/100 M/330 FT   <b>Battery Nr.:</b> 20091</p>									
241701	Maverick Small	73	7611160049827	Ronda 705	-	34	8.9	18	004305
<p><b>Case:</b> Stainless steel, silver, Polished-brushed   <b>Bezel:</b> Stainless steel, black, Polished, Unidirectional rotating bezel   <b>Dial:</b> black, Circular brushed, Military Time 24h   <b>Crystal:</b> Sapphire   <b>Case back:</b> Stainless steel, Screw-in caseback   <b>Bracelet:</b> Stainless steel, silver, Brushed   <b>Closure:</b> Stainless steel, Deployant clasp, Diver Extension   <b>Water resistant to:</b> 10 ATM/100 M/330 FT   <b>Battery Nr.:</b> 20091</p>									
241710	Airboss Mechanical MACH 9	79	7630000720184	ETA Val-joux 7750	48 h	45	14.6	22	004446.1
<p><b>Case:</b> Stainless steel, silver, Grinded   <b>Bezel:</b> Stainless steel, silver, Grinded, Bidirectional rotating bezel, Slide Rule   <b>Dial:</b> grey, Diamond-cut, Military Time 24h   <b>Crystal:</b> Sapphire   <b>Case back:</b> Stainless steel, Screw-in caseback, See-Through Caseback   <b>Bracelet:</b> Leather, brown, -   <b>Closure:</b> Stainless steel, Deployant clasp   <b>Water resistant to:</b> 10 ATM/100 M/330 FT   <b>Battery Nr.:</b> -</p>									
241716	Airboss Mechanical MACH 9	79	7630000720191	ETA Val-joux 7750	48 h	45	14.6	22	005241
<p><b>Case:</b> Stainless steel, black, Sandblasted   <b>Bezel:</b> Stainless steel, black, PVD, Bidirectional rotating bezel, Slide Rule   <b>Dial:</b> black, Diamond-cut, Military Time 24h   <b>Crystal:</b> Sapphire   <b>Case back:</b> Stainless steel, Screw-in caseback, See-Through Caseback   <b>Bracelet:</b> Fabric, black, -   <b>Closure:</b> Stainless steel, Deployant clasp   <b>Water resistant to:</b> 10 ATM/100 M/330 FT   <b>Battery Nr.:</b> -</p>									
241719.1	I.N.O.X.	17	7630000719454	Ronda 715	-	43	13.58	21	005164
<p><b>Case:</b> Stainless steel, silver, Brushed, Screw-Down Crown   <b>Bezel:</b> Stainless steel, silver, Polished-brushed, Fixed bezel   <b>Dial:</b> red, Matt, Military Time 24h   <b>Crystal:</b> Sapphire   <b>Case back:</b> Stainless steel, Screw-in caseback   <b>Bracelet:</b> Rubber, red, -   <b>Closure:</b> Stainless steel, Regular buckle   <b>Water resistant to:</b> 20 ATM/200 M/660 FT   <b>Battery Nr.:</b> 20091</p>									

Ref	Description	Page	EAN	Movement	Power reserve	Case diameter	Case height	LUG width	Strap/bracelet ref
241722	Airboss Mechanical MACH 9	79	7630000720207	ETA Val-joux 7750	48 h	45	14.6	22	004447
<p><b>Case:</b> Stainless steel, silver, Grinded   <b>Bezel:</b> Stainless steel, silver, Grinded, Bidirectional rotating bezel, Slide Rule   <b>Dial:</b> grey, Diamond-cut, Military Time 24h   <b>Crystal:</b> Sapphire   <b>Case back:</b> Stainless steel, Screw-in caseback, See-Through Caseback   <b>Bracelet:</b> Stainless steel, silver, Grinded   <b>Closure:</b> Stainless steel, Deployant clasp   <b>Water resistant to:</b> 10 ATM/100 M/330 FT   <b>Battery Nr.:</b> -</p>									
241726	I.N.O.X.	17	7630000721068	Ronda 715	-	43	13.58	21	005257.9
<p><b>Case:</b> Stainless steel, silver, Brushed, Screw-Down Crown   <b>Bezel:</b> Stainless steel, silver, Polished-brushed, Fixed bezel   <b>Dial:</b> black, Matt, Military Time 24h   <b>Crystal:</b> Sapphire   <b>Case back:</b> Stainless steel, Screw-in caseback   <b>Bracelet:</b> Paracord, black, -   <b>Closure:</b> Stainless steel, Paracord closure   <b>Water resistant to:</b> 20 ATM/200 M/660 FT   <b>Battery Nr.:</b> 20091</p>									
241733	I.N.O.X. Professional Diver	21	7630000721686	Ronda 715	-	45	14.44	22	005327
<p><b>Case:</b> Stainless steel, silver, Brushed, Screw-Down Crown   <b>Bezel:</b> Stainless steel, silver, Polished-brushed, Unidirectional rotating bezel   <b>Dial:</b> black, Matt, Military Time 24h   <b>Crystal:</b> Sapphire   <b>Case back:</b> Stainless steel, Screw-in caseback   <b>Bracelet:</b> Rubber, black, -   <b>Closure:</b> Stainless steel, Regular buckle   <b>Water resistant to:</b> 20 ATM/200 M/660 FT   <b>Battery Nr.:</b> 20091</p>									
241734	I.N.O.X. Professional Diver	21	7630000721693	Ronda 715	-	45	14.44	22	005328
<p><b>Case:</b> Stainless steel, silver, Brushed, Screw-Down Crown   <b>Bezel:</b> Stainless steel, silver, Polished-brushed, Unidirectional rotating bezel   <b>Dial:</b> blue, Matt, Military Time 24h   <b>Crystal:</b> Sapphire   <b>Case back:</b> Stainless steel, Screw-in caseback   <b>Bracelet:</b> Rubber, blue, -   <b>Closure:</b> Stainless steel, Regular buckle   <b>Water resistant to:</b> 20 ATM/200 M/660 FT   <b>Battery Nr.:</b> 20091</p>									
241736	I.N.O.X. Professional Diver	21	7630000721716	Ronda 715	-	45	14.44	22	005330
<p><b>Case:</b> Stainless steel, silver, Brushed, Screw-Down Crown   <b>Bezel:</b> Stainless steel, silver, Polished-brushed, Unidirectional rotating bezel   <b>Dial:</b> red, Matt, Military Time 24h   <b>Crystal:</b> Sapphire   <b>Case back:</b> Stainless steel, Screw-in caseback   <b>Bracelet:</b> Rubber, red, -   <b>Closure:</b> Stainless steel, Regular buckle   <b>Water resistant to:</b> 20 ATM/200 M/660 FT   <b>Battery Nr.:</b> 20091</p>									
241742	Airboss Mechanical MACH 9	79	7630000725196	ETA Val-joux 7750	48 h	45	14.6	22	005406
<p><b>Case:</b> Stainless steel, black, Sandblasted   <b>Bezel:</b> Stainless steel, black, Sandblasted, Bidirectional rotating bezel, Slide Rule   <b>Dial:</b> black, Diamond-cut, Military Time 24h   <b>Crystal:</b> Sapphire   <b>Case back:</b> Stainless steel, Screw-in caseback, See-Through Caseback   <b>Bracelet:</b> Stainless steel, black, Sandblasted   <b>Closure:</b> Stainless steel, Deployant clasp   <b>Water resistant to:</b> 10 ATM/100 M/330 FT   <b>Battery Nr.:</b> -</p>									
241745	Alliance Chrono	51	7630000723628	Ronda Z60	-	44	10.75	21	005352
<p><b>Case:</b> Stainless steel, silver, Polished   <b>Bezel:</b> Stainless steel, silver, Polished, Fixed bezel   <b>Dial:</b> black, Circular brushed   <b>Crystal:</b> Sapphire   <b>Case back:</b> Stainless steel, Screw-in caseback   <b>Bracelet:</b> Stainless steel, silver, Polished-brushed   <b>Closure:</b> Stainless steel, Deployant clasp   <b>Water resistant to:</b> 10 ATM/100 M/330 FT   <b>Battery Nr.:</b> 20075</p>									
241745.1	Alliance Chrono	52	7630000735874	Ronda Z60	-	44	10.75	21	005352
<p><b>Case:</b> Stainless steel, silver, Polished   <b>Bezel:</b> Stainless steel, silver, Polished, Fixed bezel   <b>Dial:</b> black, Circular brushed   <b>Crystal:</b> Sapphire   <b>Case back:</b> Stainless steel, Screw-in caseback   <b>Bracelet:</b> Stainless steel, silver, Polished-brushed   <b>Closure:</b> Stainless steel, Deployant clasp   <b>Water resistant to:</b> 10 ATM/100 M/330 FT   <b>Battery Nr.:</b> 20075</p>									
241746	Alliance Chrono	51	7630000723635	Ronda Z60	-	44	10.75	21	005352
<p><b>Case:</b> Stainless steel, silver, Polished   <b>Bezel:</b> Stainless steel, silver, Polished, Fixed bezel   <b>Dial:</b> blue, Circular brushed   <b>Crystal:</b> Sapphire   <b>Case back:</b> Stainless steel, Screw-in caseback   <b>Bracelet:</b> Stainless steel, silver, Polished-brushed   <b>Closure:</b> Stainless steel, Deployant clasp   <b>Water resistant to:</b> 10 ATM/100 M/330 FT   <b>Battery Nr.:</b> 20075</p>									
241751	Alliance Small	63	7630000723741	Ronda 705	-	35	8.1	17	005381
<p><b>Case:</b> Stainless steel, silver, Polished   <b>Bezel:</b> Stainless steel, silver, Polished, Fixed bezel   <b>Dial:</b> black, Mother-of-pearl   <b>Crystal:</b> Sapphire   <b>Case back:</b> Stainless steel, Screw-in caseback   <b>Bracelet:</b> Stainless steel, silver, Polished-brushed   <b>Closure:</b> Stainless steel, Deployant clasp   <b>Water resistant to:</b> 10 ATM/100 M/330 FT   <b>Battery Nr.:</b> 20091</p>									
241752	Alliance Small	63	7630000723758	Ronda 708	-	35	8.1	17	005381
<p><b>Case:</b> Stainless steel, silver, Polished   <b>Bezel:</b> Stainless steel, silver, Polished, Fixed bezel   <b>Dial:</b> blue, Mother-of-pearl, Moon phase   <b>Crystal:</b> Sapphire   <b>Case back:</b> Stainless steel, Screw-in caseback   <b>Bracelet:</b> Stainless steel, silver, Polished-brushed   <b>Closure:</b> Stainless steel, Deployant clasp   <b>Water resistant to:</b> 10 ATM/100 M/330 FT   <b>Battery Nr.:</b> 20091</p>									
241762	Alliance Large	52	7630000727671	Ronda 6004.D	-	44	9.6	21	005352
<p><b>Case:</b> Stainless steel, silver, Polished   <b>Bezel:</b> Stainless steel, silver, Polished, Fixed bezel   <b>Dial:</b> black, Circular brushed   <b>Crystal:</b> Sapphire   <b>Case back:</b> Stainless steel, Screw-in caseback   <b>Bracelet:</b> Stainless steel, silver, Polished-brushed   <b>Closure:</b> Stainless steel, Deployant clasp   <b>Water resistant to:</b> 10 ATM/100 M/330 FT   <b>Battery Nr.:</b> 003171</p>									
241763	Alliance Large	52	7630000727688	Ronda 6004.D	-	44	9.6	21	005352
<p><b>Case:</b> Stainless steel, silver, Polished   <b>Bezel:</b> Stainless steel, silver, Polished, Fixed bezel   <b>Dial:</b> blue, Circular brushed   <b>Crystal:</b> Sapphire   <b>Case back:</b> Stainless steel, Screw-in caseback   <b>Bracelet:</b> Stainless steel, silver, Polished-brushed   <b>Closure:</b> Stainless steel, Deployant clasp   <b>Water resistant to:</b> 10 ATM/100 M/330 FT   <b>Battery Nr.:</b> 003171</p>									
241763.1	Alliance Large	52	7630000735867	Ronda 6004.D	-	44	9.6	21	005352
<p><b>Case:</b> Stainless steel, silver, Polished   <b>Bezel:</b> Stainless steel, silver, Polished, Fixed bezel   <b>Dial:</b> blue, Circular brushed   <b>Crystal:</b> Sapphire   <b>Case back:</b> Stainless steel, Screw-in caseback   <b>Bracelet:</b> Stainless steel, silver, Polished-brushed   <b>Closure:</b> Stainless steel, Deployant clasp   <b>Water resistant to:</b> 10 ATM/100 M/330 FT   <b>Battery Nr.:</b> 003171</p>									
241781	I.N.O.X. Professional Diver	22	7630000727732	Ronda 715	-	45	14.44	22	005528
<p><b>Case:</b> Stainless steel, silver, Brushed, Screw-Down Crown   <b>Bezel:</b> Stainless steel, silver, Polished-brushed, Unidirectional rotating bezel   <b>Dial:</b> black, Matt, Military Time 24h   <b>Crystal:</b> Sapphire   <b>Case back:</b> Stainless steel, Screw-in caseback   <b>Bracelet:</b> Stainless steel, silver, Polished-brushed   <b>Closure:</b> Stainless steel, Deployant clasp, Diver Extension   <b>Water resistant to:</b> 20 ATM/200 M/660 FT   <b>Battery Nr.:</b> 20091</p>									
241782	I.N.O.X. Professional Diver	22	7630000727749	Ronda 715	-	45	14.44	22	005528
<p><b>Case:</b> Stainless steel, silver, Brushed, Screw-Down Crown   <b>Bezel:</b> Stainless steel, silver, Polished-brushed, Unidirectional rotating bezel   <b>Dial:</b> blue, Matt, Military Time 24h   <b>Crystal:</b> Sapphire   <b>Case back:</b> Stainless steel, Screw-in caseback   <b>Bracelet:</b> Stainless steel, silver, Polished-brushed   <b>Closure:</b> Stainless steel, Deployant clasp, Diver Extension   <b>Water resistant to:</b> 20 ATM/200 M/660 FT   <b>Battery Nr.:</b> 20091</p>									
241789	Maverick	69	7630000726629	Ronda 715	-	43	11.4	22	004793
<p><b>Case:</b> Stainless steel, silver/gold two tone, Polished-brushed   <b>Bezel:</b> Stainless steel, blue, Polished, Unidirectional rotating bezel   <b>Dial:</b> blue, Circular brushed, Military Time 24h   <b>Crystal:</b> Sapphire   <b>Case back:</b> Stainless steel, Screw-in caseback   <b>Bracelet:</b> Stainless steel, silver, Brushed   <b>Closure:</b> Stainless steel, Deployant clasp, Diver Extension   <b>Water resistant to:</b> 10 ATM/100 M/330 FT   <b>Battery Nr.:</b> 20091</p>									

# TECHNICAL SPECIFICATIONS

Ref	Description	Page	EAN	Movement	Power reserve	Case diameter	Case height	LUG width	Strap/bracelet ref
241790	Maverick Small <b>Case:</b> Stainless steel, silver/gold two tone, Polished-brushed   <b>Bezel:</b> Stainless steel, blue, Polished, Unidirectional rotating bezel   <b>Dial:</b> blue, Circular brushed, Military Time 24h   <b>Crystal:</b> Sapphire   <b>Case back:</b> Stainless steel, Screw-in caseback   <b>Bracelet:</b> Stainless steel, silver, Brushed   <b>Closure:</b> Stainless steel, Deployant clasp, Diver Extension   <b>Water resistant to:</b> 10 ATM/100 M/330 FT   <b>Battery Nr.:</b> 20091	73	7630000726636	Ronda 705	-	34	9.5	18	004845
241791	Maverick Chrono <b>Case:</b> Stainless steel, silver/gold two tone, Polished-brushed   <b>Bezel:</b> Stainless steel, blue, Polished, Unidirectional rotating bezel, Tachymeter   <b>Dial:</b> blue, Circular brushed   <b>Crystal:</b> Sapphire   <b>Case back:</b> Stainless steel, Screw-in caseback   <b>Bracelet:</b> Stainless steel, silver, Brushed   <b>Closure:</b> Stainless steel, Deployant clasp, Diver Extension   <b>Water resistant to:</b> 10 ATM/100 M/330 FT   <b>Battery Nr.:</b> 20075	71	7630000726643	Ronda 5030.D	-	43	12.2	22	004793
241797	Maverick Chrono <b>Case:</b> Stainless steel, black, Polished-brushed   <b>Bezel:</b> Stainless steel, black, PVD, Unidirectional rotating bezel   <b>Dial:</b> black, Circular brushed   <b>Crystal:</b> Sapphire   <b>Case back:</b> Stainless steel, Screw-in caseback   <b>Bracelet:</b> Stainless steel, black, Brushed   <b>Closure:</b> Stainless steel, Double locking safety clasp, Diver Extension   <b>Water resistant to:</b> 10 ATM/100 M/330 FT   <b>Battery Nr.:</b> 20075	71	7630000731678	Ronda 5030.D	-	43	12.2	22	005756
241798	Maverick <b>Case:</b> Stainless steel, black, Polished-brushed   <b>Bezel:</b> Stainless steel, black, PVD, Unidirectional rotating bezel   <b>Dial:</b> black, Circular brushed, Military Time 24h   <b>Crystal:</b> Sapphire   <b>Case back:</b> Stainless steel, Screw-in caseback   <b>Bracelet:</b> Stainless steel, black, Brushed   <b>Closure:</b> Stainless steel, Double locking safety clasp, Diver Extension   <b>Water resistant to:</b> 10 ATM/100 M/330 FT   <b>Battery Nr.:</b> 20091	69	7630000731685	Ronda 715	-	43	11.4	22	005756
241810	I.N.O.X. Professional Diver Titanium <b>Case:</b> Titanium, grey, Sandblasted, Screw-Down Crown   <b>Bezel:</b> Titanium, grey, Sandblasted, Unidirectional rotating bezel   <b>Dial:</b> grey, Matt, Military Time 24h   <b>Crystal:</b> Sapphire   <b>Case back:</b> Titanium, Screw-in caseback   <b>Bracelet:</b> Rubber, grey, -   <b>Closure:</b> Titanium, Regular buckle, Diver Extension   <b>Water resistant to:</b> 20 ATM/200 M/660 FT   <b>Battery Nr.:</b> 20091	23	7630000733146	Ronda 715	-	45	14.44	22	005732
241812	I.N.O.X. Professional Diver Titanium <b>Case:</b> Titanium, grey, Sandblasted, Screw-Down Crown   <b>Bezel:</b> Titanium, grey, Sandblasted, Unidirectional rotating bezel   <b>Dial:</b> black, Matt, Military Time 24h   <b>Crystal:</b> Sapphire   <b>Case back:</b> Titanium, Screw-in caseback   <b>Bracelet:</b> Paracord, black, -   <b>Closure:</b> Stainless steel, Paracord closure   <b>Water resistant to:</b> 20 ATM/200 M/660 FT   <b>Battery Nr.:</b> 20091	24	7630000733160	Ronda 715	-	45	14.44	22	005754.9
241813	I.N.O.X. Professional Diver Titanium <b>Case:</b> Titanium, grey, Sandblasted, Screw-Down Crown   <b>Bezel:</b> Titanium, grey, Sandblasted, Unidirectional rotating bezel   <b>Dial:</b> blue, Matt, Military Time 24h   <b>Crystal:</b> Sapphire   <b>Case back:</b> Titanium, Screw-in caseback   <b>Bracelet:</b> Paracord, blue, -   <b>Closure:</b> Stainless steel, Paracord closure   <b>Water resistant to:</b> 20 ATM/200 M/660 FT   <b>Battery Nr.:</b> 20091	24	7630000733139	Ronda 715	-	45	14.44	22	005709.9
241816	Alliance Sport Chrono <b>Case:</b> Stainless steel, silver, Brushed   <b>Bezel:</b> Aluminium, black, Polished, Fixed bezel, Tachymeter   <b>Dial:</b> black, Matt   <b>Crystal:</b> Sapphire   <b>Case back:</b> Stainless steel, Screw-in caseback   <b>Bracelet:</b> Stainless steel, silver, Polished-brushed   <b>Closure:</b> Stainless steel, Double locking safety clasp   <b>Water resistant to:</b> 10 ATM/100 M/330 FT   <b>Battery Nr.:</b> 20075	57	7630000733306	Ronda 5030.D	-	44	11	21	005761
241817	Alliance Sport Chrono <b>Case:</b> Stainless steel, silver, Brushed   <b>Bezel:</b> Aluminium, blue, Polished, Fixed bezel, Tachymeter   <b>Dial:</b> blue, Matt   <b>Crystal:</b> Sapphire   <b>Case back:</b> Stainless steel, Screw-in caseback   <b>Bracelet:</b> Stainless steel, silver, Polished-brushed   <b>Closure:</b> Stainless steel, Double locking safety clasp   <b>Water resistant to:</b> 10 ATM/100 M/330 FT   <b>Battery Nr.:</b> 20075	57	7630000733313	Ronda 5030.D	-	44	11	21	005761
241818	Alliance Sport Chrono <b>Case:</b> Stainless steel, black, Brushed   <b>Bezel:</b> Aluminium, grey, Polished, Fixed bezel, Tachymeter   <b>Dial:</b> grey, Matt   <b>Crystal:</b> Sapphire   <b>Case back:</b> Stainless steel, Screw-in caseback   <b>Bracelet:</b> Rubber, black, -   <b>Closure:</b> Stainless steel, Regular buckle   <b>Water resistant to:</b> 10 ATM/100 M/330 FT   <b>Battery Nr.:</b> 20075	57	7630000733320	Ronda 5030.D	-	44	11	21	005766
241819	Alliance Sport Chrono <b>Case:</b> Stainless steel, silver, Brushed   <b>Bezel:</b> Aluminium, red, Polished, Fixed bezel, Tachymeter   <b>Dial:</b> white, Matt   <b>Crystal:</b> Sapphire   <b>Case back:</b> Stainless steel, Screw-in caseback   <b>Bracelet:</b> Leather, black, -   <b>Closure:</b> Stainless steel, Regular buckle   <b>Water resistant to:</b> 10 ATM/100 M/330 FT   <b>Battery Nr.:</b> 20075	57	7630000733375	Ronda 5030.D	-	44	11	21	005769
241820	Airboss Mechanical <b>Case:</b> Stainless steel, black, Sandblasted   <b>Bezel:</b> Stainless steel, black, Sandblasted, Bidirectional rotating bezel, Slide Rule   <b>Dial:</b> blue, Diamond-cut, Military Time 24h   <b>Crystal:</b> Sapphire   <b>Case back:</b> Stainless steel, Screw-in caseback, See-Through Caseback   <b>Bracelet:</b> Fabric, blue, -   <b>Closure:</b> Stainless steel, Deployant clasp   <b>Water resistant to:</b> 10 ATM/100 M/330 FT   <b>Battery Nr.:</b> -	77	7630000733405	Sellita SW 200-1	38 h	42	11	22	005543.1
241824	Maverick <b>Case:</b> Stainless steel, silver, Polished-brushed   <b>Bezel:</b> Stainless steel, black/gold two tone, Polished, Unidirectional rotating bezel   <b>Dial:</b> black, Circular brushed, Military Time 24h   <b>Crystal:</b> Sapphire   <b>Case back:</b> Stainless steel, Screw-in caseback   <b>Bracelet:</b> Stainless steel, two-tone, Brushed   <b>Closure:</b> Stainless steel, Deployant clasp, Diver Extension   <b>Water resistant to:</b> 10 ATM/100 M/330 FT   <b>Battery Nr.:</b> 20091	69	7630000733337	Ronda 715	-	43	11.4	22	004793
241826	Alliance Sport Chrono <b>Case:</b> Stainless steel, silver, Brushed   <b>Bezel:</b> Aluminium, black, Polished, Fixed bezel, Tachymeter   <b>Dial:</b> black, Matt   <b>Crystal:</b> Sapphire   <b>Case back:</b> Stainless steel, Screw-in caseback   <b>Bracelet:</b> Leather, brown, -   <b>Closure:</b> Stainless steel, Regular buckle   <b>Water resistant to:</b> 10 ATM/100 M/330 FT   <b>Battery Nr.:</b> 20075	57	7630000733382	Ronda 5030.D	-	44	11	21	005803
241828	Alliance Small <b>Case:</b> Stainless steel, silver, Polished   <b>Bezel:</b> Stainless steel, silver, Polished, Fixed bezel   <b>Dial:</b> silver, Sunray brushed   <b>Crystal:</b> Sapphire   <b>Case back:</b> Stainless steel, Screw-in caseback   <b>Bracelet:</b> Stainless steel, silver, Polished-brushed   <b>Closure:</b> Stainless steel, Push-button safety clasp   <b>Water resistant to:</b> 10 ATM/100 M/330 FT   <b>Battery Nr.:</b> 20091	64	7630000733429	Ronda 705	-	35	8.1	17	005381
241831	Alliance Small <b>Case:</b> Stainless steel, silver, Polished   <b>Bezel:</b> Stainless steel, silver, Polished, Fixed bezel   <b>Dial:</b> white, Mother-of-pearl   <b>Crystal:</b> Sapphire   <b>Case back:</b> Stainless steel, Screw-in caseback   <b>Bracelet:</b> Stainless steel, two-tone, Polished-brushed   <b>Closure:</b> Stainless steel, Push-button safety clasp   <b>Water resistant to:</b> 10 ATM/100 M/330 FT   <b>Battery Nr.:</b> 20091	64	7630000733450	Ronda 705	-	35	8.1	17	005387

Ref	Description	Page	EAN	Movement	Power reserve	Case diameter	Case height	LUG width	Strap/bracelet ref
241833	Alliance Small <small>Case: Stainless steel, silver, Polished   Bezel: Stainless steel, silver, Polished, Fixed bezel   Dial: silver, Sunray brushed, Moon phase   Crystal: Sapphire   Case back: Stainless steel, Screw-in caseback   Bracelet: Stainless steel, silver, Polished-brushed   Closure: Stainless steel, Push-button safety clasp   Water resistant to: 10 ATM/100 M/330 FT   Battery Nr.: 20091</small>	63	7630000733511	Ronda 708	-	35	8.1	17	005381
241834	I.N.O.X. Mechanical <small>Case: Stainless steel, silver, Brushed, Screw-Down Crown   Bezel: Stainless steel, silver, Polished-brushed, Fixed bezel   Dial: blue, Guilloché, Military Time 24h   Crystal: Sapphire   Case back: Stainless steel, Screw-in caseback, See-Through Caseback   Bracelet: Wood, brown, -   Closure: Stainless steel, Deployant clasp   Water resistant to: 20 ATM/200 M/660 FT   Battery Nr.: -</small>	27	7630000733474	Sellita SW 200-1	38 h	43	13.5	21	005811
241835	I.N.O.X. Mechanical <small>Case: Stainless steel, silver, Brushed, Screw-Down Crown   Bezel: Stainless steel, silver, Polished-brushed, Fixed bezel   Dial: blue, Guilloché, Military Time 24h   Crystal: Sapphire   Case back: Stainless steel, Screw-in caseback, See-Through Caseback   Bracelet: Stainless steel, brown, Polished-brushed   Closure: Stainless steel, Deployant clasp, Diver Extension   Water resistant to: 20 ATM/200 M/660 FT   Battery Nr.: -</small>	27	7630000733498	Sellita SW 200-1	38 h	43	13.5	21	005261
241836	I.N.O.X. Mechanical <small>Case: Stainless steel, silver, Brushed, Screw-Down Crown   Bezel: Stainless steel, black, Polished-brushed, Fixed bezel   Dial: black, Guilloché, Military Time 24h   Crystal: Sapphire   Case back: Stainless steel, Screw-in caseback, See-Through Caseback   Bracelet: Wood, brown, -   Closure: Stainless steel, Deployant clasp   Water resistant to: 20 ATM/200 M/660 FT   Battery Nr.: -</small>	27	7630000733481	Sellita SW 200-1	38 h	43	13.5	21	005811
241837	I.N.O.X. Mechanical <small>Case: Stainless steel, silver, Brushed, Screw-Down Crown   Bezel: Stainless steel, silver, Polished-brushed, Fixed bezel   Dial: black, Guilloché, Military Time 24h   Crystal: Sapphire   Case back: Stainless steel, Screw-in caseback, See-Through Caseback   Bracelet: Stainless steel, silver, Polished-brushed   Closure: Stainless steel, Deployant clasp, Diver Extension   Water resistant to: 20 ATM/200 M/660 FT   Battery Nr.: -</small>	27	7630000733504	Sellita SW 200-1	38 h	43	13.5	21	005261
241838	Alliance XS <small>Case: Stainless steel, silver, Polished   Bezel: Stainless steel, silver, Polished, Fixed bezel   Dial: silver white, Sunray brushed   Crystal: Sapphire   Case back: Stainless steel, Screw-in caseback   Bracelet: Leather, black, -   Closure: Stainless steel, Regular buckle   Water resistant to: 10 ATM/100 M/330 FT   Battery Nr.: 23460</small>	61	7630000734860	Ronda 773	-	28	8.1	12	005850
241839	Alliance XS <small>Case: Stainless steel, silver, Polished   Bezel: Stainless steel, silver, Polished, Fixed bezel   Dial: black, Sunray brushed   Crystal: Sapphire   Case back: Stainless steel, Screw-in caseback   Bracelet: Stainless steel, silver, Polished   Closure: Stainless steel, Push-button safety clasp   Water resistant to: 10 ATM/100 M/330 FT   Battery Nr.: 23460</small>	61	7630000734884	Ronda 773	-	28	8.1	12	005853
241840	Alliance XS <small>Case: Stainless steel, silver, Polished   Bezel: Stainless steel, silver, Polished, Fixed bezel   Dial: white, Pearly-sparkle   Crystal: Sapphire   Case back: Stainless steel, Screw-in caseback   Bracelet: Stainless steel, silver, Polished   Closure: Stainless steel, Push-button safety clasp   Water resistant to: 10 ATM/100 M/330 FT   Battery Nr.: 23460</small>	60	7630000734891	Ronda 773	-	28	8.1	12	005853
241841	Alliance XS <small>Case: Stainless steel, silver/gold two tone, Polished   Bezel: Stainless steel, rose-gold, Polished, Fixed bezel   Dial: dark gray, Sunray brushed   Crystal: Sapphire   Case back: Stainless steel, Screw-in caseback   Bracelet: Stainless steel, two-tone, Polished   Closure: Stainless steel, Push-button safety clasp   Water resistant to: 10 ATM/100 M/330 FT   Battery Nr.: 23460</small>	61	7630000734907	Ronda 773	-	28	8.1	12	005861
241842	Alliance XS <small>Case: Stainless steel, silver/gold two tone, Polished   Bezel: Stainless steel, rose-gold, Polished, Fixed bezel   Dial: silver white, Sunray brushed   Crystal: Sapphire   Case back: Stainless steel, Screw-in caseback   Bracelet: Stainless steel, two-tone, Polished   Closure: Stainless steel, Push-button safety clasp   Water resistant to: 10 ATM/100 M/330 FT   Battery Nr.: 23460</small>	61	7630000734914	Ronda 773	-	28	8.1	12	005861
241843	I.N.O.X. Professional Diver <small>Case: Stainless steel, silver, Sandblasted, Screw-Down Crown   Bezel: Stainless steel, silver, Sandblasted, Unidirectional rotating bezel   Dial: blue, Sandblasted, Military Time 24h   Crystal: Sapphire   Case back: Stainless steel, Screw-in caseback   Bracelet: Paracord, blue, -   Closure: Stainless steel, Paracord closure   Water resistant to: 20 ATM/200 M/660 FT   Battery Nr.: 20091</small>	22	7630000735553	Ronda 715	-	45	14.44	22	005891.9
241844	I.N.O.X. Professional Diver <small>Case: Stainless steel, silver, Sandblasted, Screw-Down Crown   Bezel: Stainless steel, silver, Sandblasted, Unidirectional rotating bezel   Dial: grey, Sandblasted, Military Time 24h   Crystal: Sapphire   Case back: Stainless steel, Screw-in caseback   Bracelet: Rubber, yellow, -   Closure: Stainless steel, Regular buckle   Water resistant to: 20 ATM/200 M/660 FT   Battery Nr.: 20091</small>	23	7630000735560	Ronda 715	-	45	14.44	22	005329
241845	I.N.O.X. Professional Diver <small>Case: Stainless steel, silver, Sandblasted, Screw-Down Crown   Bezel: Stainless steel, silver, Sandblasted, Unidirectional rotating bezel   Dial: black, Sandblasted, Military Time 24h   Crystal: Sapphire   Case back: Stainless steel, Screw-in caseback   Bracelet: Paracord, orange, -   Closure: Stainless steel, Paracord closure   Water resistant to: 20 ATM/200 M/660 FT   Battery Nr.: 20091</small>	22	7630000735577	Ronda 715	-	45	14.44	22	005889.9
241846	FieldForce <small>Case: Stainless steel, silver, Polished-brushed   Bezel: Aluminium, black, Polished-brushed, Fixed bezel, -   Dial: black, Matt   Crystal: Sapphire   Case back: Stainless steel, Screw-in caseback   Bracelet: Leather, black, -   Closure: Stainless steel, Regular buckle   Water resistant to: 10 ATM/100 M/330 FT   Battery Nr.: 20091</small>	38	7630000735393	Ronda 517	-	42	11	21	005939
241847	FieldForce <small>Case: Stainless steel, silver, Polished-brushed   Bezel: Aluminium, black, Polished-brushed, Fixed bezel   Dial: white, Matt   Crystal: Sapphire   Case back: Stainless steel, Screw-in caseback   Bracelet: Leather, black, -   Closure: Stainless steel, Regular buckle   Water resistant to: 10 ATM/100 M/330 FT   Battery Nr.: 20091</small>	38	7630000735409	Ronda 517	-	42	11	21	005939
241848	FieldForce <small>Case: Stainless steel, silver, Polished-brushed   Bezel: Aluminium, blue, Polished-brushed, Fixed bezel   Dial: blue, Matt   Crystal: Sapphire   Case back: Stainless steel, Screw-in caseback   Bracelet: Leather, brown, -   Closure: Stainless steel, Regular buckle   Water resistant to: 10 ATM/100 M/330 FT   Battery Nr.: 20091</small>	38	7630000735416	Ronda 517	-	42	11	21	005945
241849	FieldForce <small>Case: Stainless steel, silver, Polished-brushed   Bezel: Aluminium, black, Polished-brushed, Fixed bezel   Dial: black, Matt   Crystal: Sapphire   Case back: Stainless steel, Screw-in caseback   Bracelet: Stainless steel, silver, Polished-brushed   Closure: Stainless steel, Regular buckle   Water resistant to: 10 ATM/100 M/330 FT   Battery Nr.: 20091</small>	38	7630000735423	Ronda 517	-	42	11	21	005943

# TECHNICAL SPECIFICATIONS

Ref	Description	Page	EAN	Movement	Power reserve	Case diameter	Case height	LUG width	Strap/bracelet ref
241850	FieldForce	38	7630000735430	Ronda 517	-	42	11	21	005943
<p><b>Case:</b> Stainless steel, silver, Polished-brushed   <b>Bezel:</b> Aluminium, black, Polished-brushed, Fixed bezel   <b>Dial:</b> white, Matt   <b>Crystal:</b> Sapphire   <b>Case back:</b> Stainless steel, Screw-in caseback   <b>Bracelet:</b> Stainless steel, silver, Polished-brushed   <b>Closure:</b> Stainless steel, Push-button safety clasp   <b>Water resistant to:</b> 10 ATM/100 M/330 FT   <b>Battery Nr.:</b> 20091</p>									
241851	FieldForce	38	7630000735447	Ronda 517	-	42	11	21	005943
<p><b>Case:</b> Stainless steel, silver, Polished-brushed   <b>Bezel:</b> Aluminium, blue, Polished-brushed, Fixed bezel   <b>Dial:</b> blue, Matt   <b>Crystal:</b> Sapphire   <b>Case back:</b> Stainless steel, Screw-in caseback   <b>Bracelet:</b> Stainless steel, silver, Polished-brushed   <b>Closure:</b> Stainless steel, Push-button safety clasp   <b>Water resistant to:</b> 10 ATM/100 M/330 FT   <b>Battery Nr.:</b> 20091</p>									
241852	FieldForce Chrono	39	7630000735461	Ronda 5030.D	-	42	11	21	005939
<p><b>Case:</b> Stainless steel, silver, Polished-brushed   <b>Bezel:</b> Aluminium, black, Polished-brushed, Fixed bezel, Tachymeter   <b>Dial:</b> black, Matt   <b>Crystal:</b> Sapphire   <b>Case back:</b> Stainless steel, Screw-in caseback   <b>Bracelet:</b> Leather, black, -   <b>Closure:</b> Stainless steel, Regular buckle   <b>Water resistant to:</b> 10 ATM/100 M/330 FT   <b>Battery Nr.:</b> 20075</p>									
241853	FieldForce Chrono	39	7630000735454	Ronda 5030.D	-	42	11	21	005939
<p><b>Case:</b> Stainless steel, silver, Polished-brushed   <b>Bezel:</b> Aluminium, black, Polished-brushed, Fixed bezel, Tachymeter   <b>Dial:</b> white, Matt   <b>Crystal:</b> Sapphire   <b>Case back:</b> Stainless steel, Screw-in caseback   <b>Bracelet:</b> Leather, black, -   <b>Closure:</b> Stainless steel, Regular buckle   <b>Water resistant to:</b> 10 ATM/100 M/330 FT   <b>Battery Nr.:</b> 20075</p>									
241854	FieldForce Chrono	39	7630000735478	Ronda 5030.D	-	42	11	21	005945
<p><b>Case:</b> Stainless steel, silver, Polished-brushed   <b>Bezel:</b> Aluminium, blue, Polished-brushed, Fixed bezel, Tachymeter   <b>Dial:</b> blue, Matt   <b>Crystal:</b> Sapphire   <b>Case back:</b> Stainless steel, Screw-in caseback   <b>Bracelet:</b> Leather, brown, -   <b>Closure:</b> Stainless steel, Regular buckle   <b>Water resistant to:</b> 10 ATM/100 M/330 FT   <b>Battery Nr.:</b> 20075</p>									
241855	FieldForce Chrono	39	7630000735485	Ronda 5030.D	-	42	11	21	005943
<p><b>Case:</b> Stainless steel, silver, Polished-brushed   <b>Bezel:</b> Aluminium, black, Polished-brushed, Fixed bezel, Tachymeter   <b>Dial:</b> black, Matt   <b>Crystal:</b> Sapphire   <b>Case back:</b> Stainless steel, Screw-in caseback   <b>Bracelet:</b> Stainless steel, black, Polished-brushed   <b>Closure:</b> Stainless steel, Push-button safety clasp   <b>Water resistant to:</b> 10 ATM/100 M/330 FT   <b>Battery Nr.:</b> 20075</p>									
241856	FieldForce Chrono	39	7630000735515	Ronda 5030.D	-	42	11	21	005943
<p><b>Case:</b> Stainless steel, silver, Polished-brushed   <b>Bezel:</b> Aluminium, black, Polished-brushed, Fixed bezel, Tachymeter   <b>Dial:</b> white, Matt   <b>Crystal:</b> Sapphire   <b>Case back:</b> Stainless steel, Screw-in caseback   <b>Bracelet:</b> Stainless steel, silver, Polished-brushed   <b>Closure:</b> Stainless steel, Push-button safety clasp   <b>Water resistant to:</b> 10 ATM/100 M/330 FT   <b>Battery Nr.:</b> 20075</p>									
241857	FieldForce Chrono	39	7630000735645	Ronda 5030.D	-	42	11	21	005943
<p><b>Case:</b> Stainless steel, silver, Polished-brushed   <b>Bezel:</b> Aluminium, blue, Polished-brushed, Fixed bezel, Tachymeter   <b>Dial:</b> blue, Matt   <b>Crystal:</b> Sapphire   <b>Case back:</b> Stainless steel, Screw-in caseback   <b>Bracelet:</b> Stainless steel, silver, Polished-brushed   <b>Closure:</b> Stainless steel, Push-button safety clasp   <b>Water resistant to:</b> 10 ATM/100 M/330 FT   <b>Battery Nr.:</b> 20075</p>									
241859	I.N.O.X. Carbon	16	7630000735584	Ronda 715	-	43	13.58	21	005885.9
<p><b>Case:</b> Carbon, black, -, Screw-Down Crown   <b>Bezel:</b> Carbon, black, -, Fixed bezel   <b>Dial:</b> black, Matt   <b>Crystal:</b> Sapphire   <b>Case back:</b> Carbon, Screw-in caseback   <b>Bracelet:</b> Paracord, black, -   <b>Closure:</b> Stainless steel, Paracord closure   <b>Water resistant to:</b> 20 ATM/200 M/660 FT   <b>Battery Nr.:</b> 20091</p>									
241860	I.N.O.X. Carbon	16	7630000735591	Ronda 715	-	43	13.58	21	005886.9
<p><b>Case:</b> Carbon, black, -, Screw-Down Crown   <b>Bezel:</b> Carbon, black, -, Fixed bezel   <b>Dial:</b> blue, Matt   <b>Crystal:</b> Sapphire   <b>Case back:</b> Carbon, Screw-in caseback   <b>Bracelet:</b> Paracord, blue, -   <b>Closure:</b> Stainless steel, Paracord closure   <b>Water resistant to:</b> 20 ATM/200 M/660 FT   <b>Battery Nr.:</b> 20091</p>									
241861	I.N.O.X. Carbon	16	7630000735522	Ronda 715	-	43	13.58	21	005887.9
<p><b>Case:</b> Carbon, black, -, Screw-Down Crown   <b>Bezel:</b> Carbon, black, -, Fixed bezel   <b>Dial:</b> blue, Matt   <b>Crystal:</b> Sapphire   <b>Case back:</b> Carbon, Screw-in caseback   <b>Bracelet:</b> Paracord, grey, -   <b>Closure:</b> Stainless steel, Paracord closure   <b>Water resistant to:</b> 20 ATM/200 M/660 FT   <b>Battery Nr.:</b> 20091</p>									
241862	Maverick	70	7630000735614	Ronda 715	-	43	11.4	22	005544.1
<p><b>Case:</b> Stainless steel, silver, Polished-brushed   <b>Bezel:</b> Stainless steel, black, Polished, Unidirectional rotating bezel   <b>Dial:</b> black, Circular brushed, Military Time 24h   <b>Crystal:</b> Sapphire   <b>Case back:</b> Stainless steel, Screw-in caseback   <b>Bracelet:</b> Leather, black, -   <b>Closure:</b> Stainless steel, Regular buckle   <b>Water resistant to:</b> 10 ATM/100 M/330 FT   <b>Battery Nr.:</b> 20091</p>									
241863	Maverick	70	7630000735621	Ronda 715	-	43	11.4	22	005946
<p><b>Case:</b> Stainless steel, silver, Polished-brushed   <b>Bezel:</b> Stainless steel, blue, Polished, Unidirectional rotating bezel   <b>Dial:</b> blue, Circular brushed, Military Time 24h   <b>Crystal:</b> Sapphire   <b>Case back:</b> Stainless steel, Screw-in caseback   <b>Bracelet:</b> Leather, brown, -   <b>Closure:</b> Stainless steel, Regular buckle   <b>Water resistant to:</b> 10 ATM/100 M/330 FT   <b>Battery Nr.:</b> 20091</p>									
241864	Maverick Chrono	71	7630000735638	Ronda 5030.D	-	43	11.4	22	005544.1
<p><b>Case:</b> Stainless steel, silver, Polished-brushed   <b>Bezel:</b> Stainless steel, black, Polished, Unidirectional rotating bezel, Tachymeter   <b>Dial:</b> black, Circular brushed   <b>Crystal:</b> Sapphire   <b>Case back:</b> Stainless steel, Screw-in caseback   <b>Bracelet:</b> Leather, black, -   <b>Closure:</b> Stainless steel, Regular buckle   <b>Water resistant to:</b> 10 ATM/100 M/330 FT   <b>Battery Nr.:</b> 20075</p>									
241865	Maverick Chrono	71	7630000735652	Ronda 5030.D	-	43	11.4	22	005946
<p><b>Case:</b> Stainless steel, silver, Polished-brushed   <b>Bezel:</b> Stainless steel, blue, Polished, Unidirectional rotating bezel, Tachymeter   <b>Dial:</b> blue, Circular brushed   <b>Crystal:</b> Sapphire   <b>Case back:</b> Stainless steel, Screw-in caseback   <b>Bracelet:</b> Leather, brown, -   <b>Closure:</b> Stainless steel, Regular buckle   <b>Water resistant to:</b> 10 ATM/100 M/330 FT   <b>Battery Nr.:</b> 20075</p>									

Ref	Description	Page	EAN	Movement	Power reserve	Case diameter	Case height	LUG width	Strap/bracelet ref
241866.1	I.N.O.X. Carbon Mechanical	28	7611160088567	Sellita SW 200-1	38 h	43	13.58	21	006006
<p><b>Case:</b> Carbon, black, -, Screw-Down Crown   <b>Bezel:</b> Carbon, black, Forged Carbon, Fixed bezel   <b>Dial:</b> black, Alox pattern   <b>Crystal:</b> Sapphire   <b>Case back:</b> Carbon, Screw-in caseback, See-Through Caseback   <b>Bracelet:</b> Rubber, black, -   <b>Closure:</b> Titanium, Deployant clasp   <b>Water resistant to:</b> 20 ATM/200 M/660 FT   <b>Battery Nr.:</b> -</p>									
241869	Alliance Mechanical	55	7611160088550	ETA 2892-A2	48 h	40	8.95	20	005971
<p><b>Case:</b> Stainless steel, silver, Polished   <b>Bezel:</b> Stainless steel, silver, Polished, Fixed bezel   <b>Dial:</b> black, Grainy   <b>Crystal:</b> Sapphire   <b>Case back:</b> Stainless steel, Screw-in caseback, See-Through Caseback   <b>Bracelet:</b> Leather, black, -   <b>Closure:</b> Stainless steel, Regular buckle   <b>Water resistant to:</b> 10 ATM/100 M/330 FT   <b>Battery Nr.:</b> -</p>									
241871	Alliance Mechanical	55	7611160088895	ETA 2892-A2	48 h	40	8.95	20	005971
<p><b>Case:</b> Stainless steel, silver, Polished   <b>Bezel:</b> Stainless steel, silver, Polished, Fixed bezel   <b>Dial:</b> white, Grainy   <b>Crystal:</b> Sapphire   <b>Case back:</b> Stainless steel, Screw-in caseback, See-Through Caseback   <b>Bracelet:</b> Leather, black, -   <b>Closure:</b> Stainless steel, Regular buckle   <b>Water resistant to:</b> 10 ATM/100 M/330 FT   <b>Battery Nr.:</b> -</p>									
241874	Alliance Mechanical	55	7611160088918	ETA 2892-A2	48 h	40	8.95	20	005976
<p><b>Case:</b> Stainless steel, silver, Polished   <b>Bezel:</b> Stainless steel, silver, Polished, Fixed bezel   <b>Dial:</b> white, Grainy   <b>Crystal:</b> Sapphire   <b>Case back:</b> Stainless steel, Screw-in caseback, See-Through Caseback   <b>Bracelet:</b> Stainless steel, two-tone, Polished-brushed   <b>Closure:</b> Stainless steel, Deployant clasp   <b>Water resistant to:</b> 10 ATM/100 M/330 FT   <b>Battery Nr.:</b> -</p>									
241875	Alliance XS	59	7611160088505	Ronda 773	-	28	8.1	12	005853
<p><b>Case:</b> Stainless steel, silver, Polished   <b>Bezel:</b> Stainless steel, silver, Polished, Fixed bezel   <b>Dial:</b> white, Pearly-sparkle   <b>Crystal:</b> Sapphire   <b>Case back:</b> Stainless steel, Screw-in caseback   <b>Bracelet:</b> Stainless steel, silver, Polished   <b>Closure:</b> Stainless steel, Deployant clasp   <b>Water resistant to:</b> 10 ATM/100 M/330 FT   <b>Battery Nr.:</b> 23460</p>									
241876	Alliance XS	59	7611160088512	Ronda 773	-	28	8.1	12	005861
<p><b>Case:</b> Stainless steel, silver, Polished   <b>Bezel:</b> Stainless steel, rose-gold, Polished, Fixed bezel   <b>Dial:</b> grey/gold two tone, Pearly-sparkle   <b>Crystal:</b> Sapphire   <b>Case back:</b> Stainless steel, Screw-in caseback   <b>Bracelet:</b> Stainless steel, two-tone, Polished   <b>Closure:</b> Stainless steel, Deployant clasp   <b>Water resistant to:</b> 10 ATM/100 M/330 FT   <b>Battery Nr.:</b> 23460</p>									
241877	Alliance XS	59	7611160088529	Ronda 773	-	28	8.1	12	005861
<p><b>Case:</b> Stainless steel, silver, Polished   <b>Bezel:</b> Stainless steel, rose-gold, Polished, Fixed bezel   <b>Dial:</b> white, Mother-of-pearl   <b>Crystal:</b> Sapphire   <b>Case back:</b> Stainless steel, Screw-in caseback   <b>Bracelet:</b> Stainless steel, two-tone, Polished   <b>Closure:</b> Stainless steel, Deployant clasp   <b>Water resistant to:</b> 10 ATM/100 M/330 FT   <b>Battery Nr.:</b> 23460</p>									
241878	Alliance XS	59	7611160088536	Ronda 773	-	28	8.1	12	005979
<p><b>Case:</b> Stainless steel, silver, Polished   <b>Bezel:</b> Stainless steel, silver, Polished, Fixed bezel   <b>Dial:</b> silver/gold two tone, Pearly-sparkle   <b>Crystal:</b> Sapphire   <b>Case back:</b> Stainless steel, Screw-in caseback   <b>Bracelet:</b> Mesh, silver, -   <b>Closure:</b> Stainless steel, Mesh buckle   <b>Water resistant to:</b> 10 ATM/100 M/330 FT   <b>Battery Nr.:</b> 23460</p>									
241879	Alliance XS	59	7611160088543	Ronda 773	-	28	8.1	12	005980
<p><b>Case:</b> Stainless steel, silver, Polished   <b>Bezel:</b> Stainless steel, rose-gold, Polished, Fixed bezel   <b>Dial:</b> silver/gold two tone, Mother-of-pearl   <b>Crystal:</b> Sapphire   <b>Case back:</b> Stainless steel, Screw-in caseback   <b>Bracelet:</b> Mesh, two-tone, -   <b>Closure:</b> Stainless steel, Mesh buckle   <b>Water resistant to:</b> 10 ATM/100 M/330 FT   <b>Battery Nr.:</b> 23460</p>									
241883	I.N.O.X. Titanium	18	7630000735836	Ronda 715	-	43	13.58	21	005104.1
<p><b>Case:</b> Titanium, grey, Sandblasted, Screw-Down Crown   <b>Bezel:</b> Titanium, grey, Sandblasted, Fixed bezel   <b>Dial:</b> black, Matt, Military Time 24h   <b>Crystal:</b> Sapphire   <b>Case back:</b> Titanium, Screw-in caseback   <b>Bracelet:</b> Rubber, black, -   <b>Closure:</b> Titanium, Regular buckle, Diver Extension   <b>Water resistant to:</b> 20 ATM/200 M/660 FT   <b>Battery Nr.:</b> 20091</p>									
241884	Maverick	69	7630000735850	Ronda 715	-	43	11.4	22	005756
<p><b>Case:</b> Stainless steel, black, Polished-brushed   <b>Bezel:</b> Stainless steel, silver, Polished, Fixed bezel   <b>Dial:</b> black/gold two tone, Circular brushed, Military Time 24h   <b>Crystal:</b> Sapphire   <b>Case back:</b> Stainless steel, Screw-in caseback   <b>Bracelet:</b> Stainless steel, black, Brushed   <b>Closure:</b> Stainless steel, Deployant clasp   <b>Water resistant to:</b> 10 ATM/100 M/330 FT   <b>Battery Nr.:</b> 20091</p>									
241886	Airboss Mechanical	77	7611160088994	Sellita SW 200-1	38 h	42	11	22	006019.1
<p><b>Case:</b> Stainless steel, black, Sandblasted   <b>Bezel:</b> Stainless steel, black, Sandblasted, Bidirectional rotating bezel, Slide Rule   <b>Dial:</b> black, Diamond-cut, Military Time 24h   <b>Crystal:</b> Sapphire   <b>Case back:</b> Stainless steel, Screw-in caseback, See-Through Caseback   <b>Bracelet:</b> Leather, brown, -   <b>Closure:</b> Stainless steel, Deployant clasp   <b>Water resistant to:</b> 10 ATM/100 M/330 FT   <b>Battery Nr.:</b> -</p>									
241887	Airboss Mechanical	77	7611160089007	Sellita SW 200-1	38 h	42	11	22	006019
<p><b>Case:</b> Stainless steel, silver, Grinded   <b>Bezel:</b> Stainless steel, black, Grinded, Bidirectional rotating bezel, Slide Rule   <b>Dial:</b> blue, Diamond-cut, Military Time 24h   <b>Crystal:</b> Sapphire   <b>Case back:</b> Stainless steel, Screw-in caseback, See-Through Caseback   <b>Bracelet:</b> Leather, brown, -   <b>Closure:</b> Stainless steel, Deployant clasp   <b>Water resistant to:</b> 10 ATM/100 M/330 FT   <b>Battery Nr.:</b> -</p>									
241888	Airboss Mechanical	77	7611160089014	Sellita SW 200-1	38 h	42	11	22	004447
<p><b>Case:</b> Stainless steel, silver, Grinded   <b>Bezel:</b> Stainless steel, black, Grinded, Bidirectional rotating bezel, Slide Rule   <b>Dial:</b> black, Diamond-cut, Military Time 24h   <b>Crystal:</b> Sapphire   <b>Case back:</b> Stainless steel, Screw-in caseback, See-Through Caseback   <b>Bracelet:</b> Stainless steel, silver, Grinded   <b>Closure:</b> Stainless steel, Deployant clasp   <b>Water resistant to:</b> 10 ATM/100 M/330 FT   <b>Battery Nr.:</b> -</p>									
241889	FieldForce Sport Chrono	44	7611160089144	Ronda 5030.D	-	42	11	21	005766
<p><b>Case:</b> Stainless steel, black, Polished-brushed   <b>Bezel:</b> Stainless steel, black ice, Polished, Fixed bezel, Tachymeter   <b>Dial:</b> black, Matt   <b>Crystal:</b> Sapphire   <b>Case back:</b> Stainless steel, Screw-in caseback   <b>Bracelet:</b> Rubber, black, -   <b>Closure:</b> Stainless steel, Regular buckle   <b>Water resistant to:</b> 10 ATM/100 M/330 FT   <b>Battery Nr.:</b> 20075</p>									

# TECHNICAL SPECIFICATIONS

Ref	Description	Page	EAN	Movement	Power reserve	Case diameter	Case height	LUG width	Strap/bracelet ref
241890	FieldForce Sport Chrono	44	7611160089151	Ronda 5030.D	-	42	11	21	006047
<p><b>Case:</b> Stainless steel, black, Polished-brushed   <b>Bezel:</b> Stainless steel, black ice, Polished, Fixed bezel, Tachymeter   <b>Dial:</b> black, Matt   <b>Crystal:</b> Sapphire   <b>Case back:</b> Stainless steel, Screw-in caseback   <b>Bracelet:</b> Stainless steel, black, Polished-brushed   <b>Closure:</b> Stainless steel, Deployant clasp   <b>Water resistant to:</b> 10 ATM/100 M/330 FT   <b>Battery Nr.:</b> 20075</p>									
241891	FieldForce Sport Chrono	44	7611160089168	Ronda 5030.D	-	42	11	21	005766
<p><b>Case:</b> Stainless steel, black, Polished-brushed   <b>Bezel:</b> Stainless steel, black ice, Polished, Fixed bezel, Tachymeter   <b>Dial:</b> grey/black, Matt   <b>Crystal:</b> Sapphire   <b>Case back:</b> Stainless steel, Screw-in caseback   <b>Bracelet:</b> Rubber, black, -   <b>Closure:</b> Stainless steel, Regular buckle   <b>Water resistant to:</b> 10 ATM/100 M/330 FT   <b>Battery Nr.:</b> 20075</p>									
241892	FieldForce Sport Chrono	44	7611160089175	Ronda 5030.D	-	42	11	21	005766.1
<p><b>Case:</b> Stainless steel, silver, Polished-brushed   <b>Bezel:</b> Stainless steel, black ice, Polished, Fixed bezel, Tachymeter   <b>Dial:</b> black, Matt   <b>Crystal:</b> Sapphire   <b>Case back:</b> Stainless steel, Screw-in caseback   <b>Bracelet:</b> Rubber, black, -   <b>Closure:</b> Stainless steel, Regular buckle   <b>Water resistant to:</b> 10 ATM/100 M/330 FT   <b>Battery Nr.:</b> 20075</p>									
241893	FieldForce Sport Chrono	44	7611160089182	Ronda 5030.D	-	42	11	21	006048
<p><b>Case:</b> Stainless steel, silver, Polished-brushed   <b>Bezel:</b> Stainless steel, black ice, Polished, Fixed bezel, Tachymeter   <b>Dial:</b> black, Matt   <b>Crystal:</b> Sapphire   <b>Case back:</b> Stainless steel, Screw-in caseback   <b>Bracelet:</b> Rubber, orange, -   <b>Closure:</b> Stainless steel, Regular buckle   <b>Water resistant to:</b> 10 ATM/100 M/330 FT   <b>Battery Nr.:</b> 20075</p>									
241894	I.N.O.X.	18	7611160088925	Ronda 715	-	43	13.58	21	005258.9
<p><b>Case:</b> Stainless steel, silver, Brushed, Screw-Down Crown   <b>Bezel:</b> Stainless steel, silver, Polished-brushed, Fixed bezel   <b>Dial:</b> black, Matt   <b>Crystal:</b> Sapphire   <b>Case back:</b> Stainless steel, Screw-in caseback   <b>Bracelet:</b> Paracord, green, -   <b>Closure:</b> Stainless steel, Regular buckle   <b>Water resistant to:</b> 20 ATM/200 M/660 FT   <b>Battery Nr.:</b> 20091</p>									
241895	FieldForce GMT	37	7611160090720	Ronda 515.24H	-	42	11.3	21	005939
<p><b>Case:</b> Stainless steel, silver, Polished-brushed   <b>Bezel:</b> Stainless steel, black, Polished, Fixed bezel   <b>Dial:</b> black, Matt   <b>Crystal:</b> Sapphire   <b>Case back:</b> Stainless steel, Screw-in caseback   <b>Bracelet:</b> Leather, black, -   <b>Closure:</b> Stainless steel, Push-button safety clasp   <b>Water resistant to:</b> 10 ATM/100 M/330 FT   <b>Battery Nr.:</b> 20091</p>									
241896	FieldForce GMT	37	7611160090744	Ronda 515.24H	-	42	11	21	005943
<p><b>Case:</b> Stainless steel, silver, Polished-brushed   <b>Bezel:</b> Stainless steel, blue, Polished, Fixed bezel   <b>Dial:</b> blue, Matt   <b>Crystal:</b> Sapphire   <b>Case back:</b> Stainless steel, Screw-in caseback   <b>Bracelet:</b> Stainless steel, silver, Polished-brushed   <b>Closure:</b> Stainless steel, Push-button safety clasp   <b>Water resistant to:</b> 10 ATM/100 M/330 FT   <b>Battery Nr.:</b> 20091</p>									
241897	FieldForce Sport GMT	43	7611160090737	Ronda 515.24H	-	42	11.3	21	006157
<p><b>Case:</b> Stainless steel, black, Polished-brushed   <b>Bezel:</b> Stainless steel, black, Polished, Fixed bezel   <b>Dial:</b> black, Matt   <b>Crystal:</b> Sapphire   <b>Case back:</b> Stainless steel, Screw-in caseback   <b>Bracelet:</b> Rubber, orange, -   <b>Closure:</b> Stainless steel, Regular buckle   <b>Water resistant to:</b> 10 ATM/100 M/330 FT   <b>Battery Nr.:</b> 20091</p>									
241898	Alliance Mechanical	55	7611160090768	ETA 2892-A2	48 h	40	8.95	20	003982.1
<p><b>Case:</b> Stainless steel, silver, Polished   <b>Bezel:</b> Stainless steel, silver, Polished, Fixed bezel   <b>Dial:</b> black, Grainy   <b>Crystal:</b> Sapphire   <b>Case back:</b> Stainless steel, Screw-in caseback, See-Through Caseback   <b>Bracelet:</b> Stainless steel, silver, Polished-brushed   <b>Closure:</b> Stainless steel, Deployant clasp   <b>Water resistant to:</b> 10 ATM/100 M/330 FT   <b>Battery Nr.:</b> -</p>									
241899	FieldForce Classic Chrono	41	7611160091482	Ronda 5030.D	-	42	11	21	005943
<p><b>Case:</b> Stainless steel, silver, Polished-brushed   <b>Bezel:</b> Stainless steel, black, Polished, Fixed bezel, Tachymeter   <b>Dial:</b> black, Sunray brushed   <b>Crystal:</b> Sapphire   <b>Case back:</b> Stainless steel, Screw-in caseback   <b>Bracelet:</b> Stainless steel, silver, Polished-brushed   <b>Closure:</b> Stainless steel, Push-button safety clasp   <b>Water resistant to:</b> 10 ATM/100 M/330 FT   <b>Battery Nr.:</b> 20075</p>									
241900	FieldForce Classic Chrono	41	7611160091499	Ronda 5030.D	-	42	11.9	21	006107
<p><b>Case:</b> Stainless steel, silver, Polished-brushed   <b>Bezel:</b> Stainless steel, blue, Polished, Fixed bezel, Tachymeter   <b>Dial:</b> silver white, Sunray brushed   <b>Crystal:</b> Sapphire   <b>Case back:</b> Stainless steel, Screw-in caseback   <b>Bracelet:</b> Leather, brown, -   <b>Closure:</b> Stainless steel, Deployant clasp   <b>Water resistant to:</b> 10 ATM/100 M/330 FT   <b>Battery Nr.:</b> 20075</p>									
241901	FieldForce Classic Chrono	41	7611160091505	Ronda 5030.D	-	42	11	21	005943
<p><b>Case:</b> Stainless steel, silver, Polished-brushed   <b>Bezel:</b> Stainless steel, blue, Polished, Fixed bezel, Tachymeter   <b>Dial:</b> blue, Sunray brushed   <b>Crystal:</b> Sapphire   <b>Case back:</b> Stainless steel, Screw-in caseback   <b>Bracelet:</b> Stainless steel, silver, Polished-brushed   <b>Closure:</b> Stainless steel, Push-button safety clasp   <b>Water resistant to:</b> 10 ATM/100 M/330 FT   <b>Battery Nr.:</b> 20075</p>									
241902	FieldForce Classic Chrono	41	7611160091680	Ronda 5030.D	-	42	11	21	006085
<p><b>Case:</b> Stainless steel, silver, Polished-brushed   <b>Bezel:</b> Stainless steel, grey/gold two tone, Polished, Fixed bezel, Tachymeter   <b>Dial:</b> grey, Sunray brushed   <b>Crystal:</b> Sapphire   <b>Case back:</b> Stainless steel, Screw-in caseback   <b>Bracelet:</b> Stainless steel, two-tone, Polished-brushed   <b>Closure:</b> Stainless steel, Push-button safety clasp   <b>Water resistant to:</b> 10 ATM/100 M/330 FT   <b>Battery Nr.:</b> 20075</p>									
241903	FieldForce Classic Chrono	41	7611160091673	Ronda 5030.D	-	42	11	21	006085
<p><b>Case:</b> Stainless steel, silver, Polished-brushed   <b>Bezel:</b> Stainless steel, grey/gold two tone, Polished, Fixed bezel, Tachymeter   <b>Dial:</b> grey, Sunray brushed   <b>Crystal:</b> Sapphire   <b>Case back:</b> Stainless steel, Screw-in caseback   <b>Bracelet:</b> Stainless steel, two-tone, Polished-brushed   <b>Closure:</b> Stainless steel, Push-button safety clasp   <b>Water resistant to:</b> 10 ATM/100 M/330 FT   <b>Battery Nr.:</b> 20075</p>									



Ref	Description	Page	EAN	Movement	Power reserve	Case diameter	Case height	LUG width	Strap/bracelet ref
241904	Alliance <b>Case:</b> Stainless steel, silver, Polished-brushed   <b>Bezel:</b> Stainless steel, silver, Polished, Fixed bezel   <b>Dial:</b> black, Circular brushed   <b>Crystal:</b> Sapphire   <b>Case back:</b> Stainless steel, Screw-in caseback   <b>Bracelet:</b> Leather, black, -   <b>Closure:</b> Stainless steel, Regular buckle   <b>Water resistant to:</b> 10 ATM/100 M/330 FT   <b>Battery Nr.:</b> 20091	49	7611160124821	Ronda 705	-	40	9.75	21	006165
241904.1	Alliance <b>Case:</b> Stainless steel, silver, Polished-brushed   <b>Bezel:</b> Stainless steel, silver, Polished, Fixed bezel   <b>Dial:</b> black, Circular brushed   <b>Crystal:</b> Sapphire   <b>Case back:</b> Stainless steel, Screw-in caseback   <b>Bracelet:</b> Leather, black, -   <b>Closure:</b> Stainless steel, Regular buckle   <b>Water resistant to:</b> 10 ATM/100 M/330 FT   <b>Battery Nr.:</b> 20091	51	7611160124920	Ronda 705	-	40	8.95	21	006165
241905	Alliance <b>Case:</b> Stainless steel, silver, Polished-brushed   <b>Bezel:</b> Stainless steel, silver, Polished, Fixed bezel   <b>Dial:</b> white, Circular brushed   <b>Crystal:</b> Sapphire   <b>Case back:</b> Stainless steel, Screw-in caseback   <b>Bracelet:</b> Leather, black, -   <b>Closure:</b> Stainless steel, Regular buckle   <b>Water resistant to:</b> 10 ATM/100 M/330 FT   <b>Battery Nr.:</b> 20091	49	7611160124838	Ronda 705	-	40	9.75	21	006165
241906	Alliance <b>Case:</b> Stainless steel, silver, Polished-brushed   <b>Bezel:</b> Stainless steel, silver, Polished, Fixed bezel   <b>Dial:</b> blue, Circular brushed   <b>Crystal:</b> Sapphire   <b>Case back:</b> Stainless steel, Screw-in caseback   <b>Bracelet:</b> Leather, black, -   <b>Closure:</b> Stainless steel, Regular buckle   <b>Water resistant to:</b> 10 ATM/100 M/330 FT   <b>Battery Nr.:</b> 20091	49	7611160124845	Ronda 705	-	40	9.75	21	006165
241907	Alliance <b>Case:</b> Stainless steel, silver, Polished-brushed   <b>Bezel:</b> Stainless steel, silver, Polished, Fixed bezel   <b>Dial:</b> white, Circular brushed   <b>Crystal:</b> Sapphire   <b>Case back:</b> Stainless steel, Screw-in caseback   <b>Bracelet:</b> Leather, brown, -   <b>Closure:</b> Stainless steel, Regular buckle   <b>Water resistant to:</b> 10 ATM/100 M/330 FT   <b>Battery Nr.:</b> 20091	49	7611160124852	Ronda 705	-	40	9.75	21	006128
241908	Alliance <b>Case:</b> Stainless steel, rose-gold, Polished-brushed   <b>Bezel:</b> Stainless steel, rose-gold, Polished, Fixed bezel   <b>Dial:</b> brown, Circular brushed   <b>Crystal:</b> Sapphire   <b>Case back:</b> Stainless steel, Screw-in caseback   <b>Bracelet:</b> Leather, grey, -   <b>Closure:</b> Stainless steel, Butterfly   <b>Water resistant to:</b> 10 ATM/100 M/330 FT   <b>Battery Nr.:</b> 20091	49	7611160124869	Ronda 705	-	40	9.75	21	006163
241909	Alliance <b>Case:</b> Stainless steel, silver, Polished-brushed   <b>Bezel:</b> Stainless steel, silver, Polished, Fixed bezel   <b>Dial:</b> black, Circular brushed   <b>Crystal:</b> Sapphire   <b>Case back:</b> Stainless steel, Screw-in caseback   <b>Bracelet:</b> Stainless steel, silver, Polished-brushed   <b>Closure:</b> Stainless steel, Butterfly   <b>Water resistant to:</b> 10 ATM/100 M/330 FT   <b>Battery Nr.:</b> 20091	50	7611160124876	Ronda 705	-	40	60	21	006135
241910	Alliance <b>Case:</b> Stainless steel, silver, Polished-brushed   <b>Bezel:</b> Stainless steel, silver, Polished, Fixed bezel   <b>Dial:</b> blue, Circular brushed   <b>Crystal:</b> Sapphire   <b>Case back:</b> Stainless steel, Screw-in caseback   <b>Bracelet:</b> Stainless steel, silver, Polished-brushed   <b>Closure:</b> Stainless steel, Butterfly   <b>Water resistant to:</b> 10 ATM/100 M/330 FT   <b>Battery Nr.:</b> 20091	50	7611160124883	Ronda 705	-	40	60	21	006135
241910.1	Alliance <b>Case:</b> Stainless steel, silver, Polished-brushed   <b>Bezel:</b> Stainless steel, silver, Polished, Fixed bezel   <b>Dial:</b> blue, Circular brushed   <b>Crystal:</b> Sapphire   <b>Case back:</b> Stainless steel, Screw-in caseback   <b>Bracelet:</b> Stainless steel, silver, Polished-brushed   <b>Closure:</b> Stainless steel, Butterfly   <b>Water resistant to:</b> 10 ATM/100 M/330 FT   <b>Battery Nr.:</b> 20091	51	7611160124944	Ronda 705	-	40	8.95	21	006135
241911	Alliance <b>Case:</b> Stainless steel, silver, Polished-brushed   <b>Bezel:</b> Stainless steel, rose-gold, Polished, Fixed bezel   <b>Dial:</b> blue, Circular brushed   <b>Crystal:</b> Sapphire   <b>Case back:</b> Stainless steel, Screw-in caseback   <b>Bracelet:</b> Stainless steel, two-tone, Polished-brushed   <b>Closure:</b> Stainless steel, Butterfly   <b>Water resistant to:</b> 10 ATM/100 M/330 FT   <b>Battery Nr.:</b> 20091	50	7611160124890	Ronda 705	-	40	60	21	006134
241912	Alliance <b>Case:</b> Stainless steel, silver, Polished-brushed   <b>Bezel:</b> Stainless steel, rose-gold, Polished, Fixed bezel   <b>Dial:</b> white, Circular brushed   <b>Crystal:</b> Sapphire   <b>Case back:</b> Stainless steel, Screw-in caseback   <b>Bracelet:</b> Stainless steel, two-tone, Polished-brushed   <b>Closure:</b> Stainless steel, Butterfly   <b>Water resistant to:</b> 10 ATM/100 M/330 FT   <b>Battery Nr.:</b> 20091	50	7611160124906	Ronda 705	-	40	60	21	006134
241913	Alliance <b>Case:</b> Stainless steel, silver, Polished-brushed   <b>Bezel:</b> Stainless steel, rose-gold, Polished, Fixed bezel   <b>Dial:</b> green, Circular brushed   <b>Crystal:</b> Sapphire   <b>Case back:</b> Stainless steel, Screw-in caseback   <b>Bracelet:</b> Stainless steel, two-tone, Polished-brushed   <b>Closure:</b> Stainless steel, Butterfly   <b>Water resistant to:</b> 10 ATM/100 M/330 FT   <b>Battery Nr.:</b> 20091	50	7611160124913	Ronda 705	-	40	60	21	006134
241915	Alliance XS <b>Case:</b> Stainless steel, silver, Polished   <b>Bezel:</b> Stainless steel, silver, Polished, Fixed bezel   <b>Dial:</b> green, Sunray brushed   <b>Crystal:</b> Sapphire   <b>Case back:</b> Stainless steel, Screw-in caseback   <b>Bracelet:</b> Stainless steel, silver, Polished   <b>Closure:</b> Stainless steel, Butterfly   <b>Water resistant to:</b> 10 ATM/100 M/330 FT   <b>Battery Nr.:</b> 23460	60	7611160092106	Ronda 773	-	28	8.1	12	005853
241916	Alliance XS <b>Case:</b> Stainless steel, silver, Polished   <b>Bezel:</b> Stainless steel, silver, Polished, Fixed bezel   <b>Dial:</b> blue, Sunray brushed   <b>Crystal:</b> Sapphire   <b>Case back:</b> Stainless steel, Screw-in caseback   <b>Bracelet:</b> Stainless steel, silver, Polished   <b>Closure:</b> Stainless steel, Butterfly   <b>Water resistant to:</b> 10 ATM/100 M/330 FT   <b>Battery Nr.:</b> 23460	60	7611160092113	Ronda 773	-	28	8.1	12	005853
241917	Alliance XS <b>Case:</b> Stainless steel, silver, Polished   <b>Bezel:</b> Stainless steel, silver, Polished, Fixed bezel   <b>Dial:</b> gold, Sunray brushed   <b>Crystal:</b> Sapphire   <b>Case back:</b> Stainless steel, Screw-in caseback   <b>Bracelet:</b> Stainless steel, silver, Polished   <b>Closure:</b> Stainless steel, Butterfly   <b>Water resistant to:</b> 10 ATM/100 M/330 FT   <b>Battery Nr.:</b> 23460	60	7611160092120	Ronda 773	-	28	8.1	12	005853
241918	I.N.O.X. V <b>Case:</b> Stainless steel, silver, Brushed   <b>Bezel:</b> Stainless steel, silver, Polished-brushed, Fixed bezel   <b>Dial:</b> black, Matt   <b>Crystal:</b> Sapphire   <b>Case back:</b> Stainless steel, Screw-in caseback   <b>Bracelet:</b> Paracord, black, -   <b>Closure:</b> Stainless steel, Regular buckle   <b>Water resistant to:</b> 10 ATM/100 M/330 FT   <b>Battery Nr.:</b> 20091	31	7611160121639	Ronda 715	-	37	12.4	18	006073.9
241919	I.N.O.X. V <b>Case:</b> Stainless steel, silver, Brushed   <b>Bezel:</b> Stainless steel, silver, Polished-brushed, Fixed bezel   <b>Dial:</b> white, Matt   <b>Crystal:</b> Sapphire   <b>Case back:</b> Stainless steel, Screw-in caseback   <b>Bracelet:</b> Rubber, blue, -   <b>Closure:</b> Stainless steel, Regular buckle   <b>Water resistant to:</b> 10 ATM/100 M/330 FT   <b>Battery Nr.:</b> 20091	32	7611160121868	Ronda 715	-	37	12.4	18	006145
241920	I.N.O.X. V <b>Case:</b> Stainless steel, silver, Brushed   <b>Bezel:</b> Stainless steel, silver, Polished-brushed, Fixed bezel   <b>Dial:</b> grey, Matt   <b>Crystal:</b> Sapphire   <b>Case back:</b> Stainless steel, Screw-in caseback   <b>Bracelet:</b> Paracord, grey, -   <b>Closure:</b> Stainless steel, Regular buckle   <b>Water resistant to:</b> 10 ATM/100 M/330 FT   <b>Battery Nr.:</b> 20091	31	7611160121875	Ronda 715	-	37	12.4	18	006123.9

# TECHNICAL SPECIFICATIONS

Ref	Description	Page	EAN	Movement	Power reserve	Case diameter	Case height	LUG width	Strap/bracelet ref
241921	I.N.O.X. V	32	7611160121882	Ronda 715	-	37	12.4	18	006146
<b>Case:</b> Stainless steel, silver, Brushed   <b>Bezel:</b> Stainless steel, silver, Polished-brushed, Fixed bezel   <b>Dial:</b> white, Matt   <b>Crystal:</b> Sapphire   <b>Case back:</b> Stainless steel, Screw-in caseback   <b>Bracelet:</b> Rubber, white, -   <b>Closure:</b> Stainless steel, Regular buckle   <b>Water resistant to:</b> 10 ATM/100 M/330 FT   <b>Battery Nr.:</b> 20091									
241926.1	FieldForce Sport Chrono	43	7611160166500	Ronda 5030.D	-	42	0	21	006214
<b>Case:</b> Stainless steel, black, Sandblasted   <b>Bezel:</b> Stainless steel, black, Sandblasted, Fixed bezel, Tachymeter   <b>Dial:</b> black, Matt   <b>Crystal:</b> Sapphire   <b>Case back:</b> Stainless steel, Screw-in caseback   <b>Bracelet:</b> Rubber, black, -   <b>Closure:</b> Stainless steel, Regular buckle   <b>Water resistant to:</b> 10 ATM/100 M/330 FT   <b>Battery Nr.:</b> 20075									
241927.1	I.N.O.X. Carbon LE	15	7611160134752	Ronda 715	-	43	13.58	21	005258.9
<b>Case:</b> Carbon, black, -, Screw-Down Crown   <b>Bezel:</b> Carbon, black, -, Fixed bezel   <b>Dial:</b> green, -   <b>Crystal:</b> Sapphire   <b>Case back:</b> Carbon, Screw-in caseback   <b>Bracelet:</b> Paracord, green, -   <b>Closure:</b> Stainless steel, Regular buckle   <b>Water resistant to:</b> 20 ATM/200 M/660 FT   <b>Battery Nr.:</b> 20091									
241928	FieldForce Classic Chrono	41	7611160125040	Ronda 5030.D	-	42	11.9	21	006179
<b>Case:</b> Stainless steel, silver, Polished-brushed   <b>Bezel:</b> Stainless steel, black, Polished, Fixed bezel, Tachymeter   <b>Dial:</b> black, Sunray brushed   <b>Crystal:</b> Sapphire   <b>Case back:</b> Stainless steel, Screw-in caseback   <b>Bracelet:</b> Leather, brown, -   <b>Closure:</b> Stainless steel, Deployant clasp   <b>Water resistant to:</b> 10 ATM/100 M/330 FT   <b>Battery Nr.:</b> 20075									
241929	FieldForce Classic Chrono	41	7611160125392	Ronda 5030.D	-	42	11.9	21	006180
<b>Case:</b> Stainless steel, silver, Polished-brushed   <b>Bezel:</b> Stainless steel, blue, Polished, Fixed bezel, Tachymeter   <b>Dial:</b> blue, Sunray brushed   <b>Crystal:</b> Sapphire   <b>Case back:</b> Stainless steel, Screw-in caseback   <b>Bracelet:</b> Leather, black, -   <b>Closure:</b> Stainless steel, Deployant clasp   <b>Water resistant to:</b> 10 ATM/100 M/330 FT   <b>Battery Nr.:</b> 20075									
241954	I.N.O.X. V	32	7611160185839	Ronda 715	-	37	12.4	18	006311
<b>Case:</b> Stainless steel, rose-gold, Brushed   <b>Bezel:</b> Stainless steel, rose-gold, Polished-brushed, Fixed bezel   <b>Dial:</b> white, Matt   <b>Crystal:</b> Sapphire   <b>Case back:</b> Stainless steel, Screw-in caseback   <b>Bracelet:</b> Rubber, white, -   <b>Closure:</b> Stainless steel, Regular buckle   <b>Water resistant to:</b> 10 ATM/100 M/330 FT   <b>Battery Nr.:</b> 20091									
241955	I.N.O.X. V	31	7611160185846	Ronda 715	-	37	12.4	18	006313
<b>Case:</b> Stainless steel, rose-gold, Brushed   <b>Bezel:</b> Stainless steel, rose-gold, Polished-brushed, Fixed bezel   <b>Dial:</b> blue, Matt   <b>Crystal:</b> Sapphire   <b>Case back:</b> Stainless steel, Screw-in caseback   <b>Bracelet:</b> Paracord, blue, -   <b>Closure:</b> Stainless steel, Regular buckle   <b>Water resistant to:</b> 10 ATM/100 M/330 FT   <b>Battery Nr.:</b> 20091									





## Victorinox AG

Schmiedgasse 57

6438 Ibach-Schwyz

Switzerland

T +41 41 81 81 211

info@victorinox.com

www.victorinox.com



© Victorinox AG 2021

We protect our intellectual property rights.

We reserve our rights for technical modifications.

The product information contained in this catalog was current at the time of printing. Victorinox AG reserves the right to change specifications and designs without notice and without liability for such change.

“Victorinox”, the famous Victorinox Cross and Shield, and “Swiss Army” are trademarks owned by Victorinox AG and its affiliates.

